



THE ENERGYLOGIC

PRODUCT CATALOG

Order: (844) 318-8770 | Fax: (615) 471-5202



Terms and Conditions

General Information

1. EnergyLogic is abbreviated as ELV“Our” refers to EnergyLogic. “You” and “your” refer to the National account.
2. All content in this catalog is subject to change without notice.

Product and Price Information

3. Specifications and availability of products are subject to change without notice.
4. Any typographical, photographic, drawing, or specification error in products or pricing is subject to correction.
5. Products shown are not to scale.
6. Products may vary in appearance.
7. EL shall have the right to refuse or cancel any orders placed for any product listed at the incorrect price.
8. Promotional sales are not retroactive.

Shipping

9. Freight included (within 48 contiguous states) with minimum order of \$100 for DC's and \$150 for stores.
10. FOB Origin.
11. All freight damage claims must be filed by destination addressee.

Payment Terms

12. Net 60 from invoice date.
13. Please submit orders via EDI, email to customerservice@energylogic.com or fax to (615) 471-5202.

Return Authorization

14. All returns require prior approval and a return authorization (RA) number which may be obtained by contacting Customer Service.
15. All goods must be returned in original packaging, unused and damage free.
16. Proof of purchase may be required.
17. Returns are subject to a 10% restocking fee. Product must be salable and in original packaging.
18. Return freight paid by sender.

Parts Use Statement

When repairs are made within the Limited Warranty, only genuine EnergyLogic, LLC or EnergyLogic, LLC (EL) approved parts and accessories may be used. Parts and accessories advertised as being “the same” as parts required by EL, but not sold through EL, do not qualify for use in warranty repairs or any repairs paid for by EL.

Parts not approved by EL may not have been validated, tested or certified for use. Non-approved parts or assemblies may result in a change to the unit's design characteristics and will affect its ability to conform to UL or NFPA guidelines. For this reason, EL disclaims all liability for loss or damage resulting from the use of non-approved parts or assemblies and the Limited Warranty of the unit containing such parts or assemblies is voided. EL parts installed onto a product not sold by EL do not conform to UL or NFPA guidelines. EL disclaims all liability for loss or damage resulting from such products and the Limited Warranty of such parts will be voided.



Contact Us



Tyler Greer

NATIONAL ACCOUNTS MANAGER

☎ (615) 471-5204

📠 (615) 471-5202

✉ TGreer@energylogic.com



Sydney Williamson

PROGRAM MANAGER

☎ (615) 471-5218

📠 (615) 471-5202

✉ SWilliamson@energylogic.com

Technical Support



JoJo Brannon

TECHNICAL PHONE SUPPORT

☎ (800) 351-0643

✉ techsupport@energylogic.com



Bryan Collins

TECHNICAL SUPPORT COORDINATOR

☎ (800) 351-0643

✉ techsupport@energylogic.com

Orders can be placed via EDI,

By phone: 1 (844) 318-8770, or by email: CustomerService@energylogic.com.

EnergyLogic.com

Fully Integrated Heating & Cooling Solutions

Heaters, Boilers, and HVLS fans that work together to provide alternative energy solutions for year-round energy and operational savings with long-term predictability.

Advanced Technology

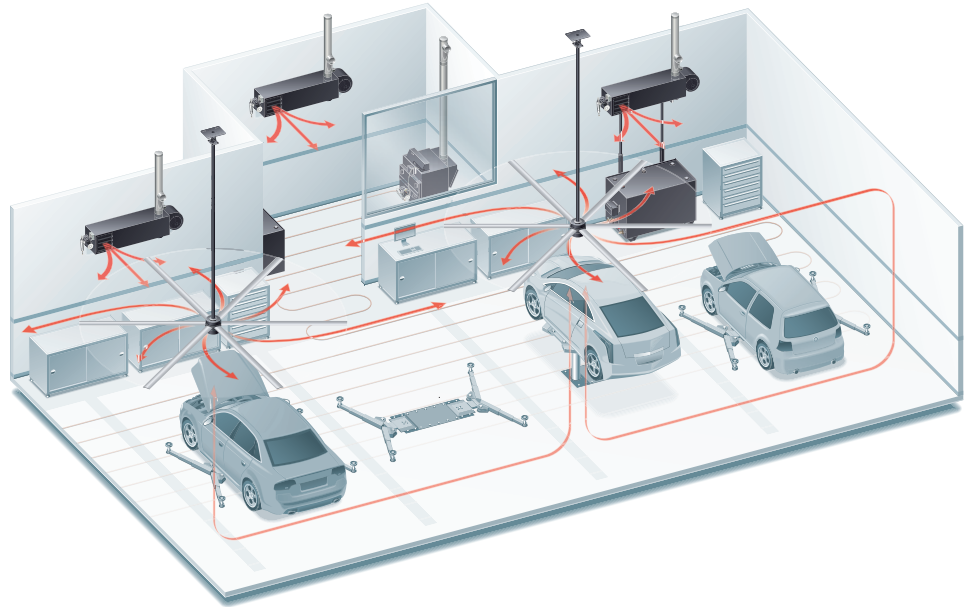
EnergyLogic is on the leading edge of waste oil combustion technology. Evident by our multiple patents, our equipment has distinguishable performance advantages over any other brand.

Industry's Longest Warranty

Offering up to 2 years coverage on parts, 10 years on the heat exchanger, which exceeds all other brands and provides total support for your investment.

Ready to Heat - Out of the Box

EnergyLogic systems are designed to be fully automated, requiring no adjustments by your staff... except setting the thermostat.



Automated Fuel Management

- Engineered for reliable oil flow from internal or external oil storage to all heating units.
- System integration for complete automation with visual and audible alarms for troubleshooting.
- Exclusive low fuel indicator helps warn you of low fuel levels in the tank and alleviates the nuisance of re-priming and restarting.
- Fuel storage and delivery provides heat reliability as easy as conventional heat.

Heaters

- Tank, wall, or ceiling mount installation options.
- Needs less than half the maintenance.
- Integrated air compressor means no need for shop air, providing 24/7 heat availability.
- Patented burner technology delivers twice the heat rise for the fastest temperature setting recovery.
- Stainless steel heat exchanger prevents warping, weld breakage, and caustic corrosion.

Boilers

- Built specifically for waste oil from the ground up.
- Every component is designed to maximize performance, making it as reliable as conventional boilers.
- Our automated fuel management system delivers optimum performance to heat water for multiple applications.
- In-floor radiant heat; ice melt; hot water for carwash; potable water; built-in capacity to run open and closed loop systems.

HVLS Fans

- High volume, low speed (HVLS) fans are efficient and cost-effective supplements to existing heating and cooling systems and can reduce both installation and operation costs by 25%.
- Comfortable, quiet airflow.
- Corrosion resistant anodized blades.
- Packaged installation-ready
- Forward, reverse, and variable speeds.
- Fans include a 50,000 hour warranty.
- Created by the inventor of HVLS technology - MacroAir Inc.

Table of Contents

Waste Oil Heaters	2
Waste Oil Heater Product Details	3
Complete Systems	4
Waste Oil Heater Units.....	5
Heater Sizing Chart-BTU Calculator.....	6
Making the Deal	7
What Makes EnergyLogic Different from the Competition?	8
Competitor Comparisons.....	9
10-Step Installation Guide	11-12
Heater Line Drawings.....	13-18
Waste Oil Heater Parts & Accessories	20
Flue Chimney Kits	21
Thermostats.....	22
Waste Oil Heater Parts & Accessories.....	23-26
Waste Oil Tanks.....	27
Waste Oil Tank Accessories.....	28
Waste Oil Boilers	30
Waste Oil Boiler Product Details	31
Waste Oil Boiler Units & Complete Systems.....	32
Boiler Line Drawings	33-38
Waste Oil Boiler Parts & Accessories	40
Waste Oil Boiler Parts & Accessories.....	41-44
High Volume Low Speed Fans	46
AirVolution-D Fan Specs & Mounting Guide.....	47-48
AirVolution-D 370 Product Overview	49-50
AirVolution-D3 Product Overview.....	51-52
AirVolution-D 550 Product Overview	53-54
AirVolution-D 780 Product Overview	55-56







Waste Oil Heaters



Waste Oil Heater Product Details

EXCLUSIVE

Stainless Steel Heat Exchanger

Designed to prevent corrosion, warping and weld breakage. Built to last decades, not years. Open design for easy cleaning.

STANDARD

Digital Hour Meter

Tracks runtime.

PATENTED

Accutemp Preheater

Rapidly heats the widest range of viscosities of used oil, synthetic oils and other acceptable fuels.

STANDARD

Integrated Air Compressor

Built in so you don't have to connect to and rely on shop air. Providing 24/7 heating availability.

PATENTED

Side Suction Metering Fuel Pump

Reliable, consistent fuel delivery regardless of fuel type (up to 90W) with no manual adjustments.

EXCLUSIVE*

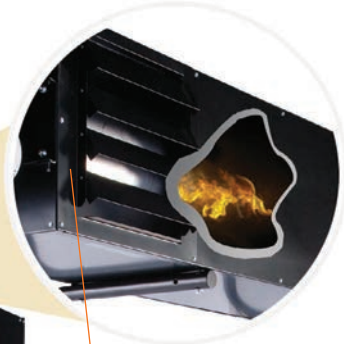
Low Fuel Cut Off

*Included with fuel delivery kits, complete systems and with heater only.

EXCLUSIVE

Elevated Fuel Pick Up

- 1) Pump can be mounted at the fuel source—instead of on top of the tank—so the pump is flooded with used oil, not air!
- 2) Fuel pick up is six inches above the bottom of the tank, above water and sludge, ensuring only used oil is sent to the heater.
- 3) Easy spin-on stainless mesh filter.



PATENTED

Flame Retention Head

*Not pictured. This patented design creates a hotter flame than competitor brands for complete fuel combustion and highest heat output. Less ash is produced resulting in longer maintenance intervals than competitor brands.

STANDARD

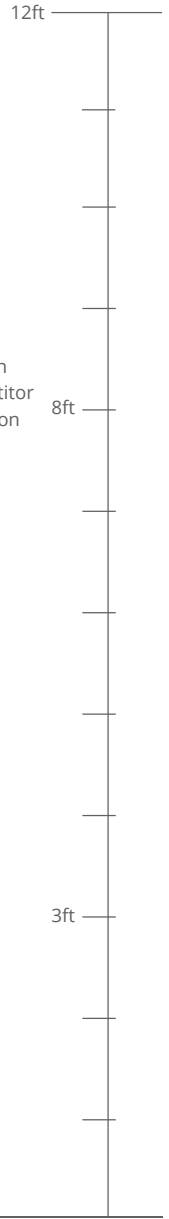
Swing Away Burner

This convenient combination makes cleaning the chamber faster and easier than any other brand. One tool, 30 minutes or less.

STANDARD

Fuel Gauge

Visual indicator of how much used oil is in your tank.



EXCLUSIVE

Drain Valve

Makes it simple to purge water or other contaminants that naturally settle in the bottom of the tank.

STANDARD*

Class A Flue Kit

Stainless steel interior, double-wall flue kits are UL-listed and meet local codes.

*Standard for complete system or sold separately.

*Minimum 12ft ceiling height for tank mounted heater.
*Wall mount brackets available.

Pictured: EL200H on 250 gallon single wall tank and Class A Flue Kit.

EnergyLogic provides a full line of tanks, flue kits and other parts and accessories for a complete and custom install.

Complete Systems

EnergyLogic Complete Systems are the simplest, most cost-effective solution for turning waste oil into free heat. Packaged units are shipped largely preassembled and include side suction, mounted pumps on the tank, a tank mounting kit to attach the heater and a flue kit. All heaters come standard with an on-board air compressor, draft gauge, and a stainless steel heat exchanger. All heaters also come with a two-year* parts warranty and a ten-year heat exchanger warranty.

*Upon registration. See details on page 8.



**These units are the
BEST DEAL ON THE MARKET!**

Item Number	Model	Description	Weight
ENL01140102	140H	Heater, 130 Gallon Single Wall Tank, 6" Flue Kit	759 lbs
ENLEL01140108	140H	Heater, 200 Gallon Single Wall Tank, 6" Flue Kit	749 lbs
ENL01140103	140H	Heater, 250 Gallon Single Wall Tank, 6" Flue Kit	749 lbs
ENLEL01200103	200H	Heater, 130 Gallon Single Wall Tank, 6" Flue Kit	781 lbs
ENLEL01200109	200H	Heater, 200 Gallon Single Wall Tank, 6" Flue Kit	770 lbs
ENL01200104	200H	Heater, 250 Gallon Single Wall Tank, 6" Flue Kit	770 lbs
ENL01350104	350H	Heater, 250 Gallon Single Wall Tank, 8" Flue Kit	902 lbs

*Custom systems with 500 gallon tank available on request.

Waste Oil Heater Units



The EL-140H Waste Oil Heater

Heats up to 3,500 square feet.

It's a great fit for smaller shops working out of one to four service bays.

Model 140H

Item Number	ENLEL01140101
BTU's	140,000 BTU
Heats Up to	3,500 sq ft
Weight	295 lbs
Heater Dimensions	18" H x 18" W x 92" L
Fuel Flow Rate	1 gallon/hour



The EL-200H Waste Oil Heater

Heats up to 3,500 - 5000 square feet.

Ideal for shops with approximately four to eight service bays.

Model 200H

Item Number	ENLEL01200101
BTU's	200,000 BTU
Heats Up to	5,000 sq ft
Weight	315 lbs
Heater Dimensions	18" H x 18" W x 103" L
Fuel Flow Rate	1.4 gallons/hour



The EL-350H Waste Oil Heater

Heats up to 9000 square feet.

Best solution for larger shops with eight or more service bays.

Model 350H

Item Number	ENLEL01350101
BTU's	350,000 BTU
Heats Up to	9,000 sq ft
Weight	415 lbs
Heater Dimensions	22" H x 22" W x 117" L
Fuel Flow Rate	2.5 gallons/hour

Approved Fuels

Used crankcase oils, ATF, No. 2 fuel oil, up to 90 weight gear oil, and diesel fuel.

Electrical Requirement

115 VAC 60Hz, 25 amps—maximum dedicated circuit.

Warranty

10 years on heat exchanger, five years full and five years prorated. Up to 2 years on parts.*

Regulation and Certification

EPA approved. UL-Listed - U.S. and Canada.

* One year warranty standard. Second year warranty requires product registration within 30 days of product receipt.



Heater Sizing Chart—BTU Calculator

Step 1

Calculate your cubic footage.

to determine which EnergyLogic Waste Oil Heater is best for your space.

Cubic Footage Formula

$$\text{Length} \times \text{Height} \times \text{Width} = \text{Cubic Feet}$$

Step 2

Determine BTU's required.

by multiplying your cubic feet by x3 or x4, depending on your space. Use the *insulation multipliers* chart (to the right) to decide which number is appropriate for you.

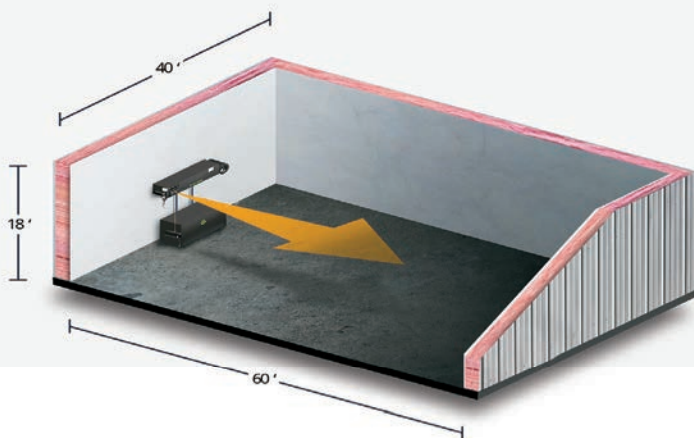
Insulation Multipliers

x3

Moderately to well-insulated spaces and new construction.

x4

Minimally to non-insulated spaces, or spaces with frequently opening shop doors and a higher need for quick heat recovery.



Example

If insulation multiplier **x3** is appropriate:
 $43,200 \text{ CF} \times 3 = 129,600 \text{ BTU's}$

If insulation multiplier **x4** is appropriate:
 $43,200 \text{ CF} \times 4 = 172,800 \text{ BTU's}$

Step 3

Select a waste oil heater.

Once you have the BTU requirements, select a heater from the left-hand page.

Example Scenario

In the example above, the x3 insulation multiplier would require an EL140H heater, while the same sized space with the x4 insulation multiplier would require an EL200H.



PRO TIP

Have a TALL Ceiling?

Combining a MacroAir HVLS Fan by EnergyLogic with any of our waste oil heater models can **reduce BTU requirements by up to 15%**! Call for more details.

Making the Deal



Qualifying Customers

- Any business that generates 800 gallons or more of waste oil per year.
- Any business that wants to save money.
- Any business that pays to have their waste removed or gives their oil away.
- Any business that currently has an older waste oil heater.



Ask Key Questions

- How are you currently heating your shop?
- Determine shop size:
(Length x Width x Ceiling Height)
- How much waste oil is generated each month?
- How is your waste oil being stored?



Considerations

- Climate.
- Ceiling height.
- Insulation factors - excellent, fair, poor, or none.
- Customer expectations – desired indoor temperature.

1 Who can install a unit?

The customer can! 80% of all National Account customers self-install.

- Be sure to show the 10-Step Easy Install Guide and video.
- The most efficient install is for the customer to assemble the unit (80%) and hire a local HVAC company to install the flue and run electrical.
- Third party installers are available. Be sure to secure the sale - some installers sell too.

2 What are the maintenance requirements?

EnergyLogic heaters and boilers have the longest run time intervals in the industry.

- Cleaning ash from the heat exchanger every 800-1000 hours is required.
- Changing the fuel filter every 800-1000 hours is recommended.
- Full burner service every other year is recommended.
- A burner service can be performed by the customer or by the factory. Contact us for details.

3 Are waste oil heaters and boilers legal?

Yes! The EPA classifies these as Energy Recovery Devices and they are permitted in all states except California. The EPA views burning oil on site as one of the safest ways to dispose of waste oil.

4 Who will support the product if there is an issue?

EnergyLogic employs the best technical service support team in the industry.

- Once the unit is registered, the customer has a lifetime of technical support.
- Registering the unit in the first 30 days of ownership, provides the customer with a 2nd year parts warranty at no extra cost.

5 What if I have a prospect who needs more information?

- For Sales and/or Competitive Questions, contact EnergyLogic at **(800) 318-8770**.
- For Technical Questions, contact Technical Support at **(800) 351-0643**.

What Makes EnergyLogic Different from the Competition?



GET WARMER FASTER

Patented Flame Retention Head

We get you warmer faster with less maintenance by generating the hottest flame in the industry. Our patented flame retention head is designed for complete combustion, which offers two big benefits. First, you get the highest heat output – double the heat rise compared to the competition. Second, you get the longest maintenance interval, due to a flame so hot it incinerates most impurities, leaving less ash to clean.



USES WIDEST RANGE OF OILS & SYNTHETICS

More Fuels, No Hassles

Our heaters are the simplest to own and operate. That's because our heaters run on fuels from 5 to 90 weight (even synthetics) thanks to a Beckett chassis and a patented preheater design. They work together to maximize the efficiency and heat output of the waste oil you burn. And our patented metering pump by Danfoss provides consistent, reliable fuel delivery, regardless of fuel type, without manual adjustments.



LOWEST MAINTENANCE

Highest Heat + Smartest Design

Our combustion technology is designed to keep your heater cleaner longer. Our heaters have a longer maintenance interval. We make cleaning quick and easy with a swing-away burner and ash removal port that offers unparalleled access to a chamber made of one wide tube. Compare that to competing models composed of several small tubes that are not only difficult to access but also tend to accumulate ash very quickly. With our design you'll get more uptime between cleanings and make short work of your maintenance routine.



SUPERIOR CONSTRUCTION TRANSLATES TO SUPERIOR HEAT QUALITY

Stainless & Peerless

Why a stainless steel heat exchanger? Only stainless steel is able to withstand the higher temps produced by our burner. Stainless steel is also a superior heat conductor, which means you get warmer faster. Compared to the heavy, cumbersome carbon steel used by the competition, stainless steel is lighter, better at heating, and is far more resistant to warping and weld breakage. It also does a superior job of incinerating contaminants that lead to corrosion. That's why the life of our heater is measured in decades – not years.



NO NEED TO HOOK UP SHOP AIR TO OUR HEATERS

On-Board Air Compressor

Why run shop air 24/7 to heat your space? EnergyLogic burners come with a small, super-efficient air compressor mounted right on the unit. It provides the perfect amount of airflow with no manual adjustments. Most competitors' units require you to use shop air, taxing a vital resource in your shop and adding hours of unnecessary runtime to keep your facility warm during off-hours. But with EnergyLogic heaters, you get the air you need, only when you need it.



TEN-YEAR WARRANTY

Warranty

10 years on heat exchanger, 5 years full and 5 years prorated. Up to 2 years on parts (1-year standard, 2nd year requires product registration within 30 days of receipt).



Competitor Comparisons



Heat Rise	110°F	60°F	60°F	60°F	60°F	60°F
Longest Maintenance Cycle	1000 Hours	500 Hours	1000 Hours	400 Hours	700 Hours	700 Hours
Range of Burnable Oils	No. 2 - 90W	No. 2 - 50W	No. 2 - 50W	No. 2 - 50W	No. 2 - 90W	No. 2 - 50W
Burns Synthetic Oils	Yes	No	No	No	Yes	No
Adjustments/ Maintenance Required Weekly*	No	No	Yes	Yes	Yes	Yes
Ease of Maintenance	Swing Out Burner, 1 Large Tube	9+ Small Tubes	1 Large Tube, Burner Gun	8+ Small Tubes	1 Large Tube, 3 Smaller Tubes	1 Large Tube, 3 Smaller Tubes
Parts Warranty	2 years[†]	1 Years	1 Year	1 Year	3 Years	1 Year
On Board Air Compressor (Doesn't Use Shop Air)	Standard	Optional	Optional	Optional	Standard	Standard - Piston Compressor
Low Fuel Cut-Off	Standard	No	No	No	Optional	No
Metering Pump	Standard	Optional	Optional	No	Optional	Standard
Money Back Guarantee	Yes	No	No	No	No	No

* According to manufacturers operations manual.

[†] One year warranty standard. Second year warranty requires product registration within 30 days of product receipt.



10-Step Easy Install Guide

Step 1

Position Tank

Position tank approximately 4" from wall. Make sure there is access for maintaining the burner. Refer to Page 6 in the Heater Installation and Operation Manual (Document No. 98030028).

Step 2

Install Arms

Insert tank arms into square retainers. Refer to Page 12 in the Heater Installation and Operation Manual.

Step 3

Mount Cabinet

Remove the four bolts located on the bottom of the heater. Secure tank arms to heater. Lift heater and arms together using a forklift and secure tank arms with four bolts. Refer to Pages 12-13 in the Heater Installation and Operation Manual.

Step 4

Install Tank Accessories

Install Tank Vent (not included), Drain Valve, and Low-Fuel Cutoff Switch. Refer to Page 16 in the Heater Installation and Operation Manual.

Step 5

Mount Pump & Filter**

Refer to Pages 17-18 in the Heater Installation and Operation Manual for details.

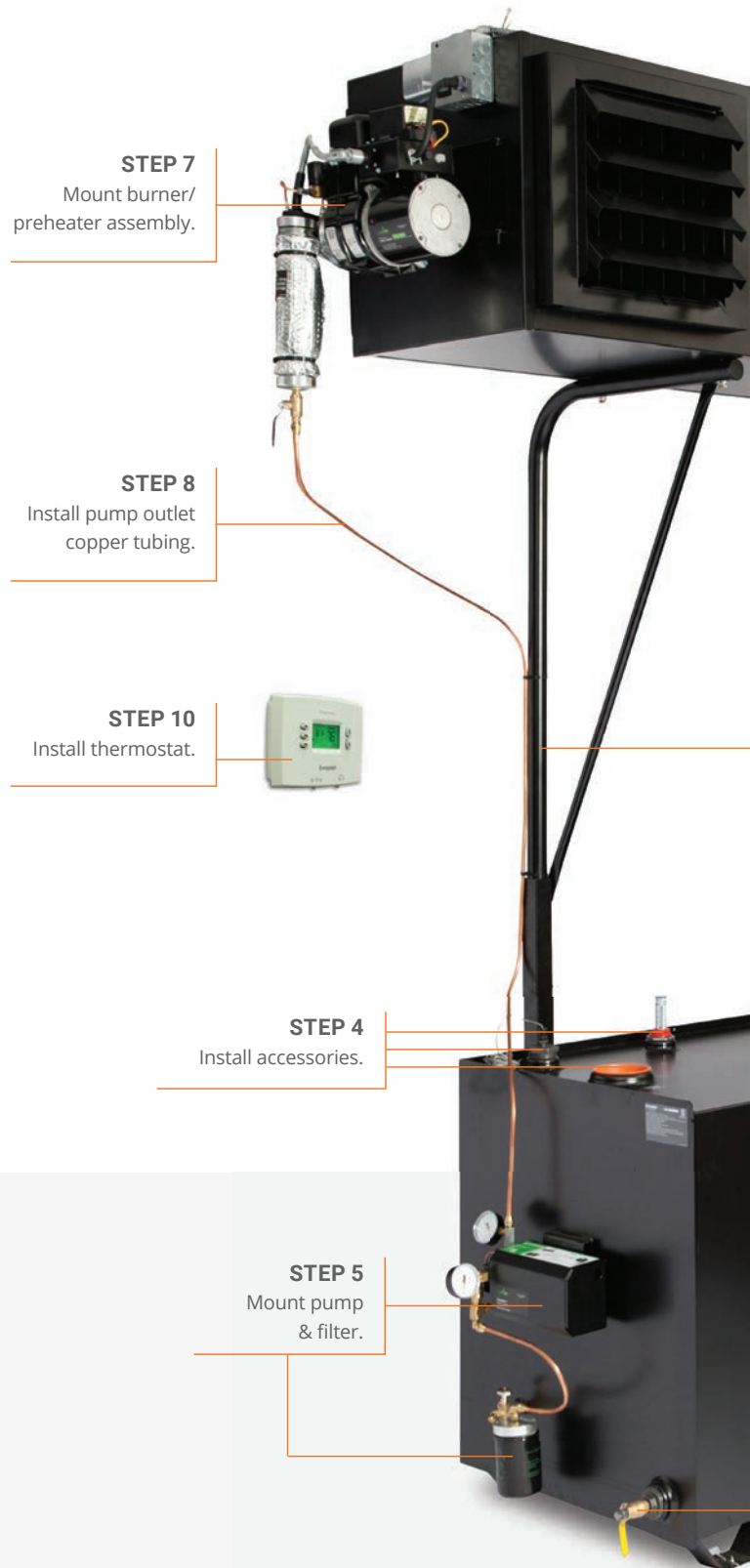
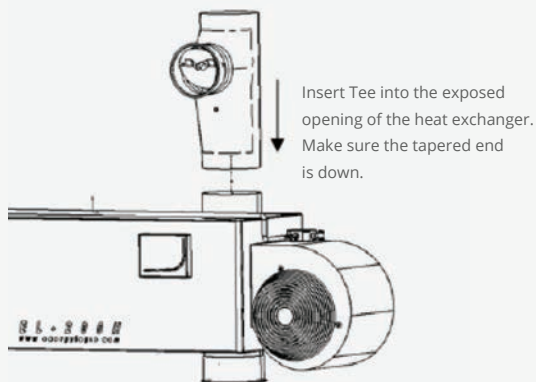


Figure A - Installation of Exhaust Flue System.





STEP 9
Install exhaust
flue system.

STEP 10
Install draft gauge.

STEP 6
Install blower
assembly.

STEP 3
Mount Cabinet.

STEP 2
Install arms.

****NOTE:**
Wiring details for electrical
systems (burner assembly,
pump assembly, and
thermostat) are provided
in Pages 30-32 in the
Heater Installation and
Operation Manual.

STEP 1
Position tank.

STEP 4
Install accessories.

Step 6

Install Blower Assembly**

Make sure the shipping strap is removed prior to installation. Refer to Pages 20-21 in the Heater Installation and Operation Manual for details.

Step 7

Mount Burner / Preheater Assembly**

Refer to Pages 22-23 in the Heater Installation and Operation Manual for details.

Step 8

Install Pump Outlet Copper Tubing

Refer to Pages 24-25 in the Heater Installation and Operation Manual for details.

Step 9

Install Exhaust Flue System

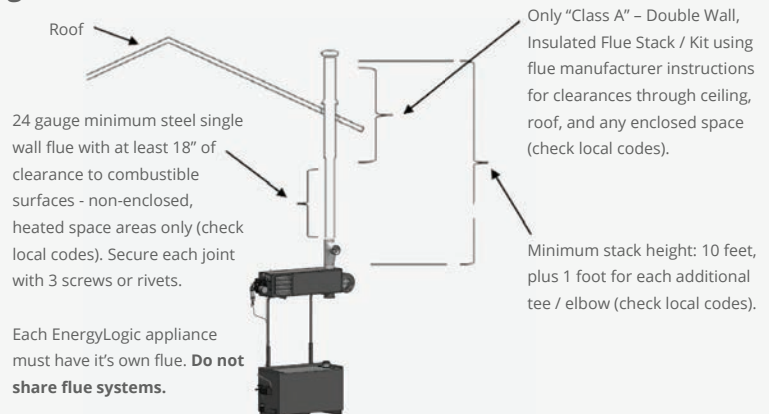
Refer to Pages 26-28 in the Heater Installation and Operation Manual for details. (See **Figure A and B** for detailed parts breakout and configuration.)

Step 10

Install Draft Gauge & Thermostat

Refer to Pages 27-30 in the Heater Installation and Operation Manual for details.

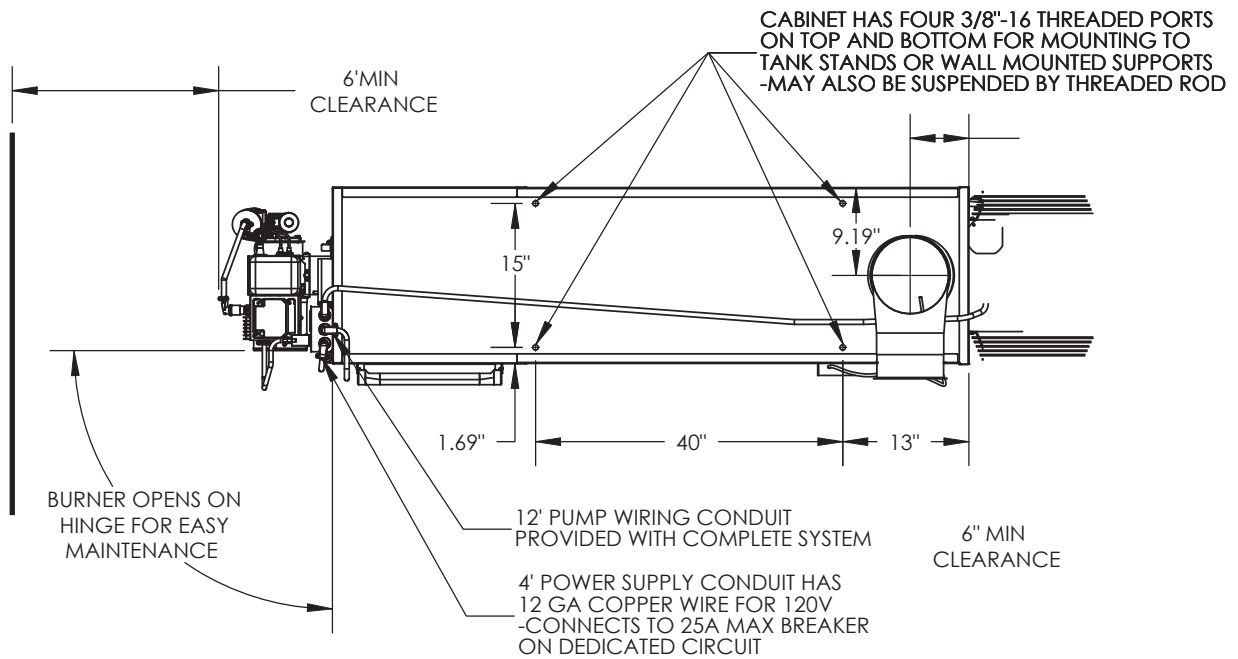
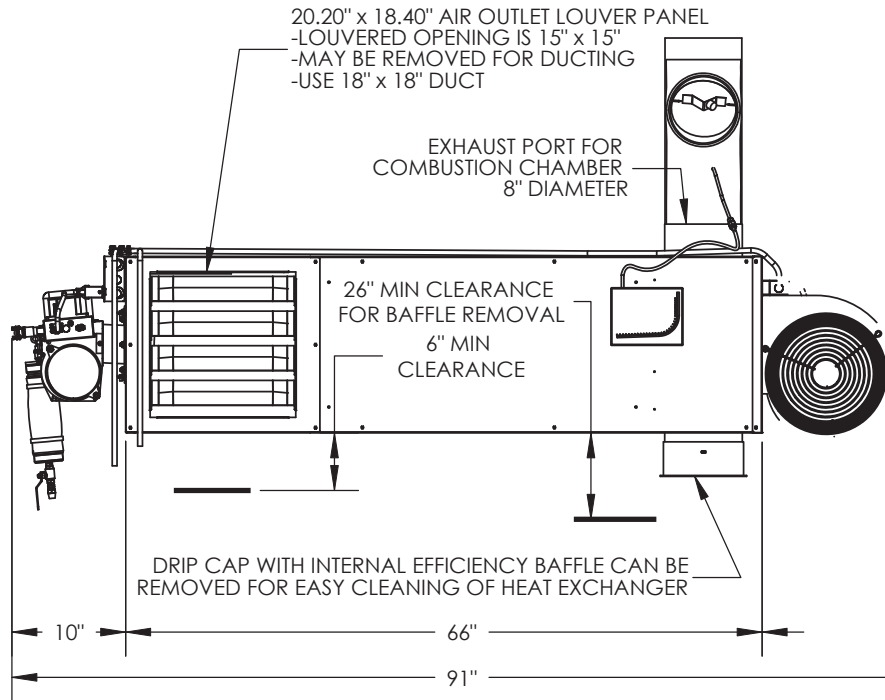
Figure B - Installation of Vertical Stack.

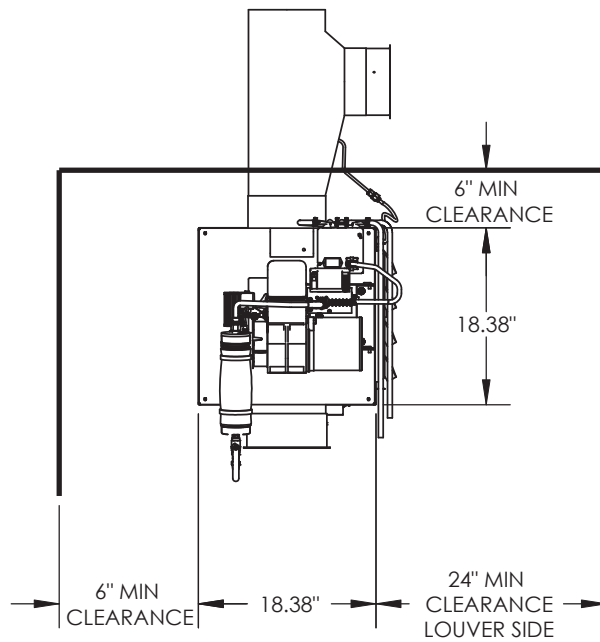
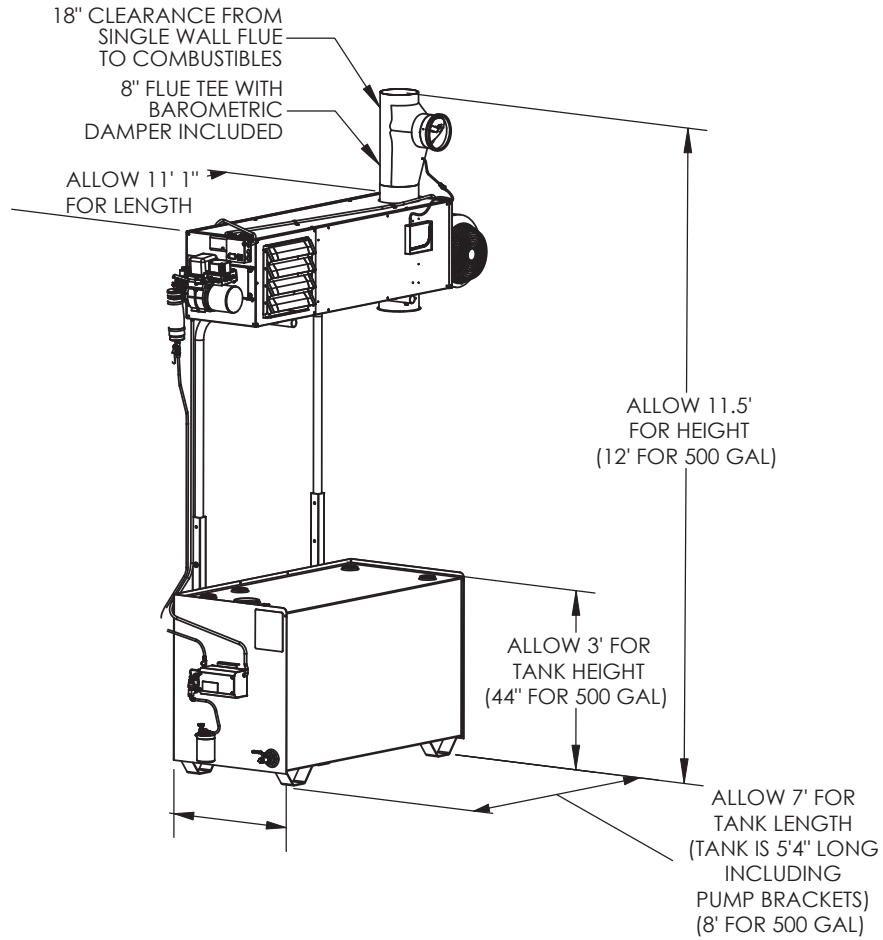


Model EL-140H

Shown with 250 gallon SW Tank

- **Cabinet Weight with Burner and Blower:** Approximate 295 lbs.
- **Tank Weight Empty:** Approximate 350 lbs (600 lbs for 500 gallon SW).
- **Flue Diameter:** 6".
- **Free Air Delivery:** 1000 CFM.
- **Heating Area:** Approximate 3500 sq. ft. with 16' ceilings.

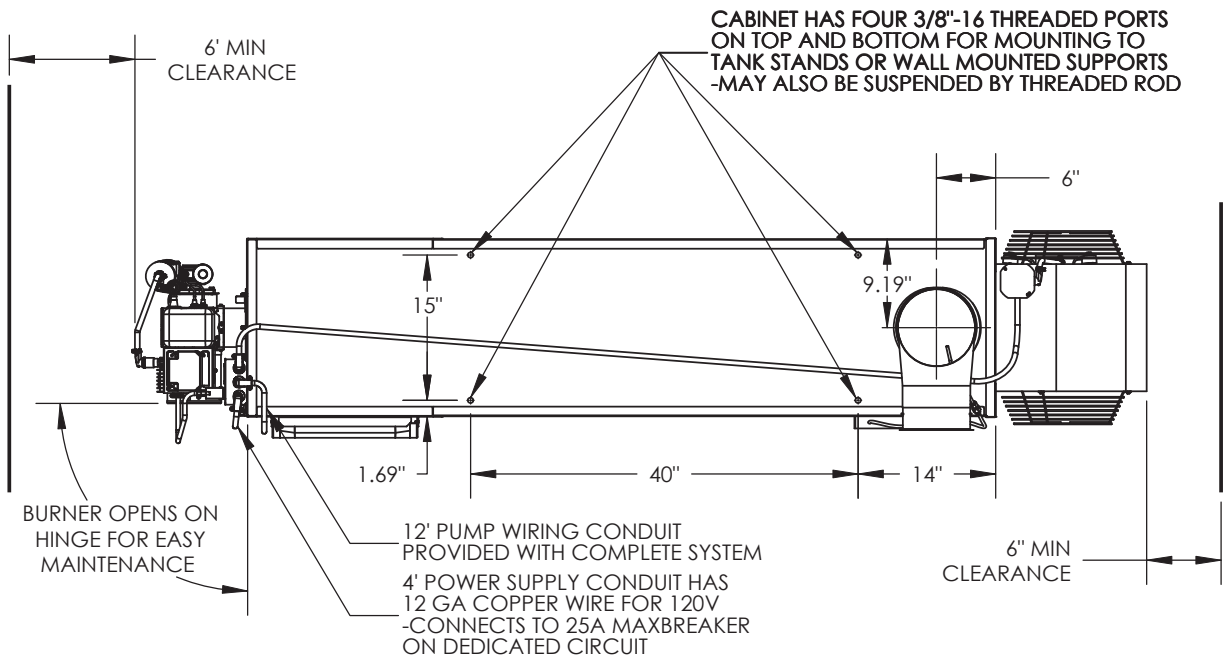
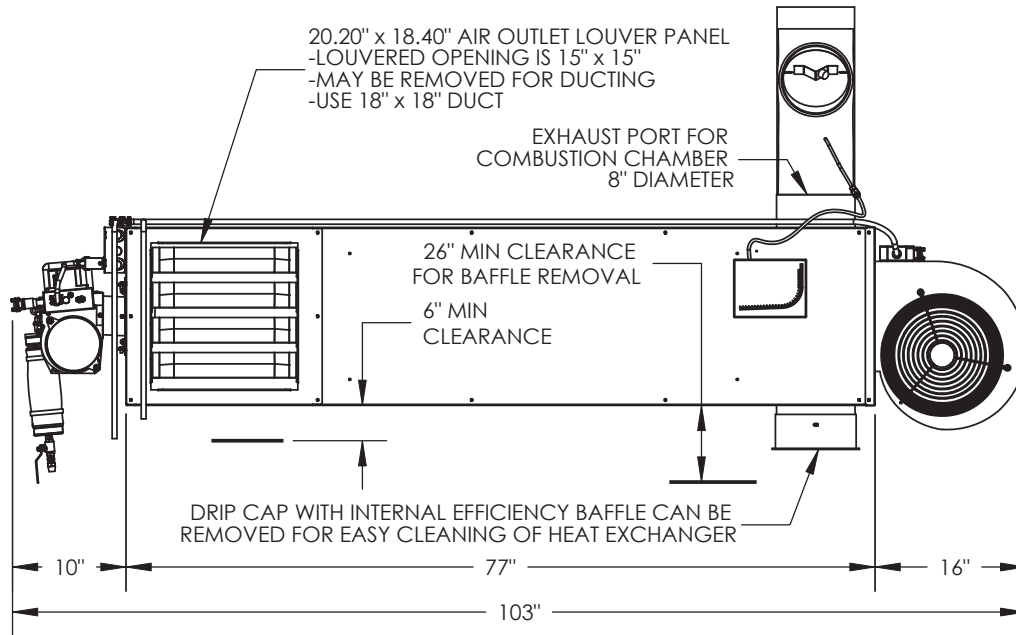


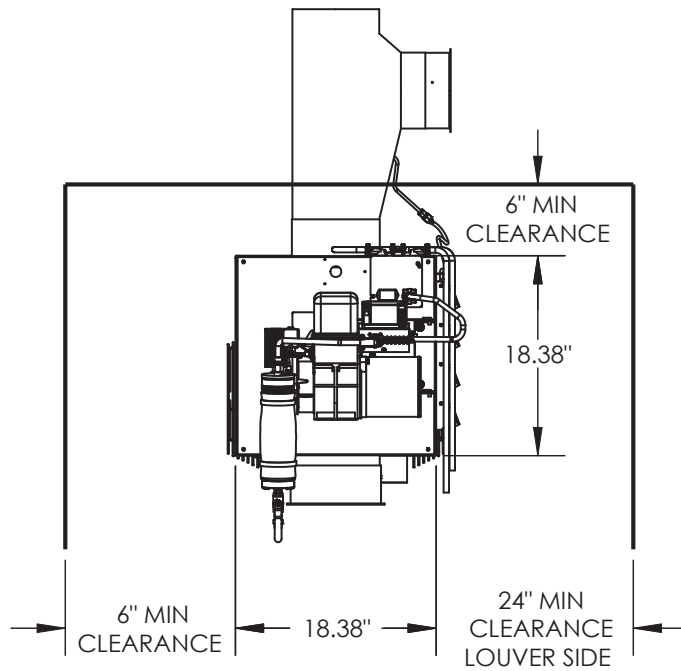
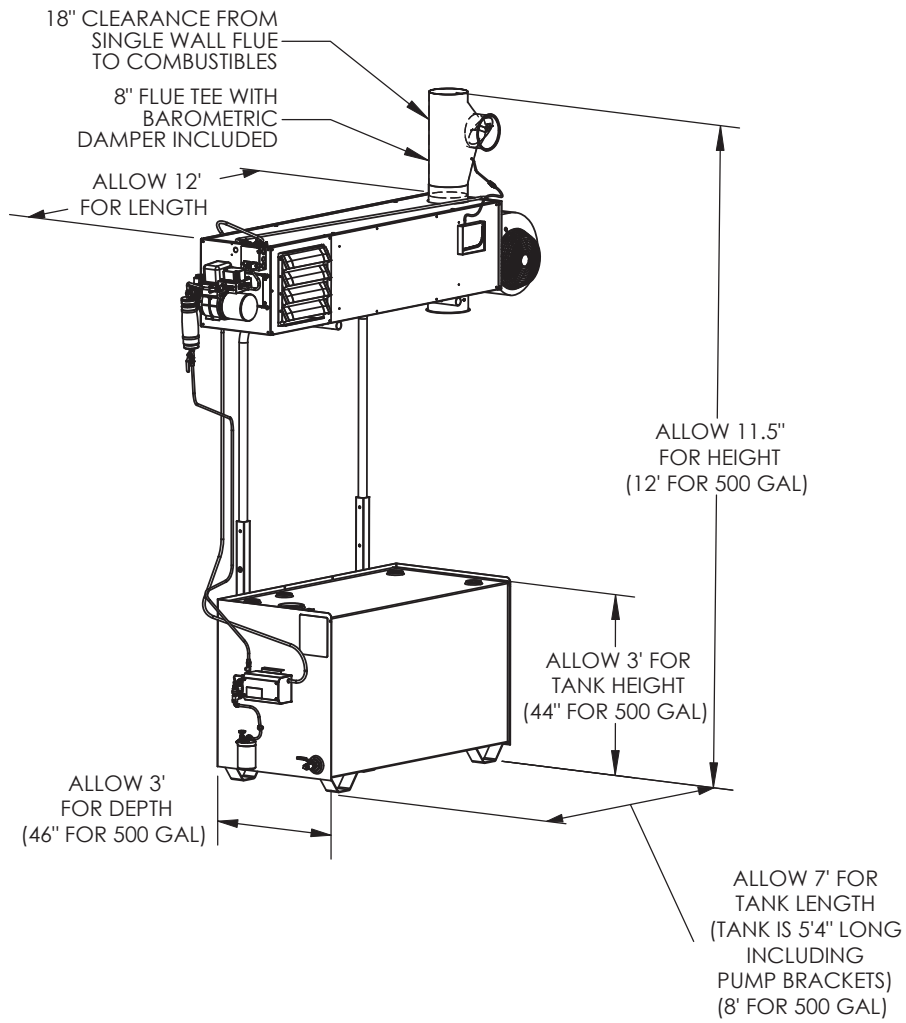


Model EL-200H

Shown with 250 gallon SW Tank

- **Cabinet Weight with Burner and Blower:** Approximate 315 lbs.
- **Tank Weight Empty:** Approximate 350 lbs (600 lbs for 500 gallon SW).
- **Flue Diameter:** 6".
- **Free Air Delivery:** 1500 CFM.
- **Heating Area:** Approximate 5000 sq. ft. with 16' ceilings.

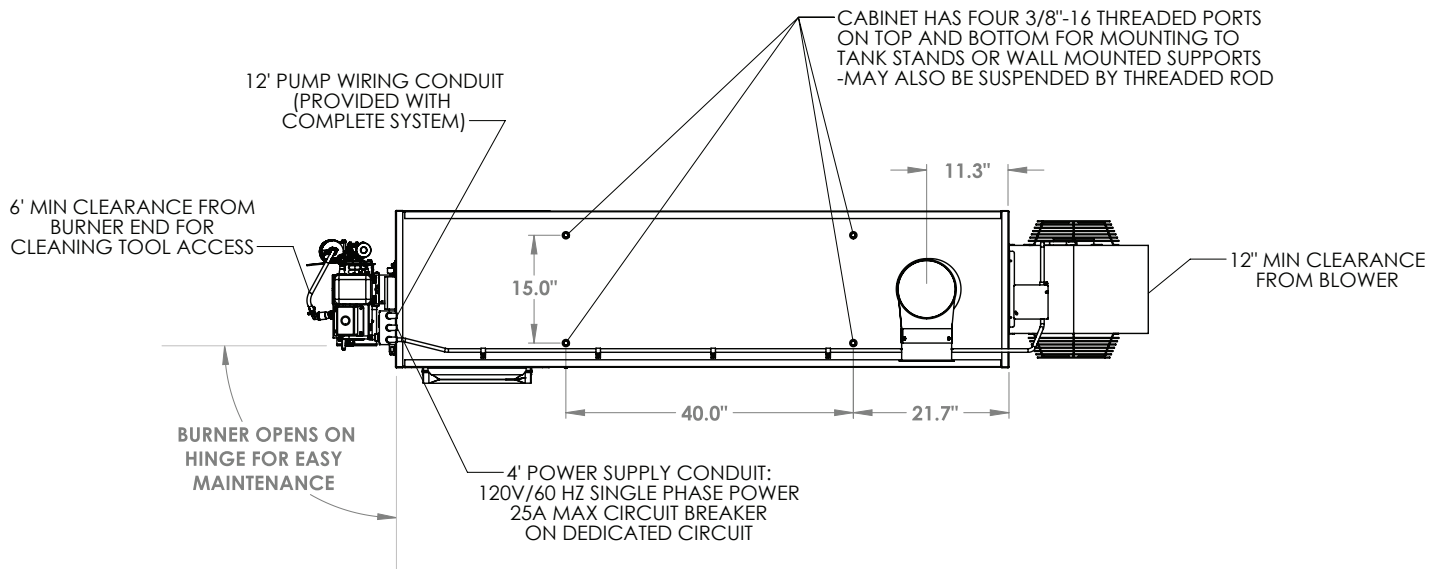
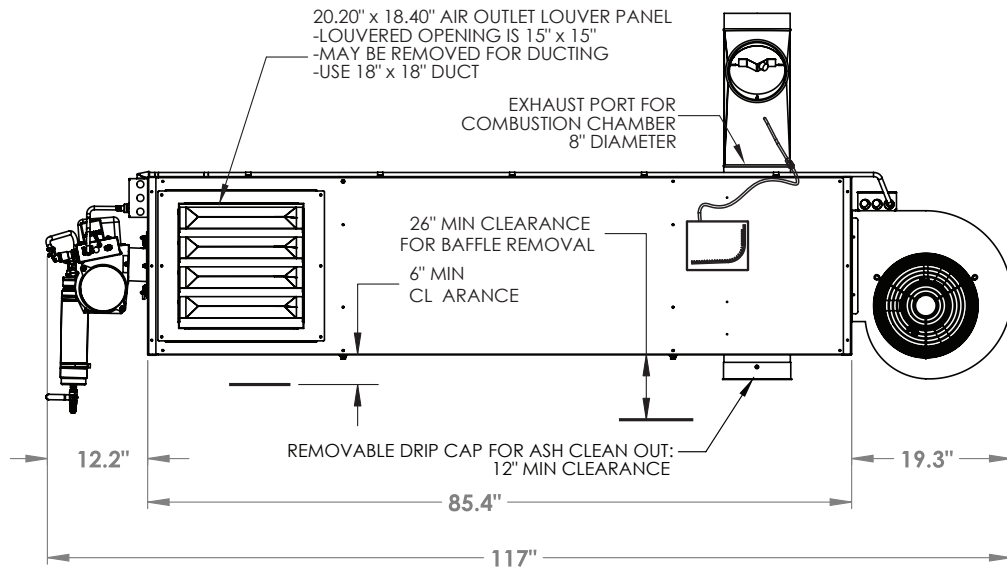


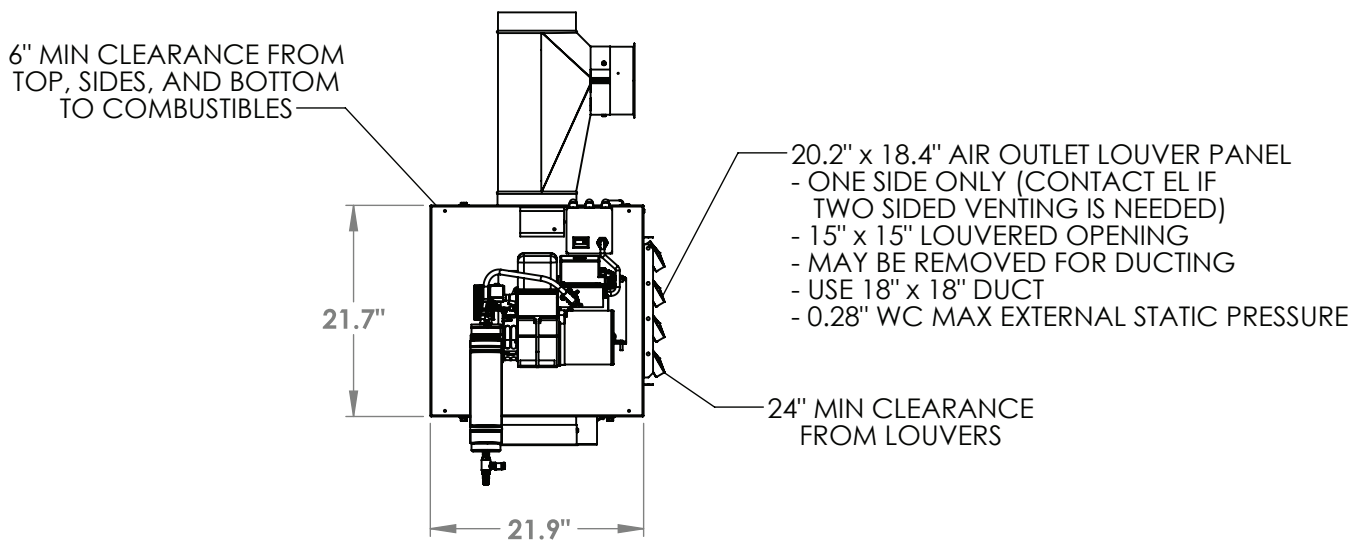
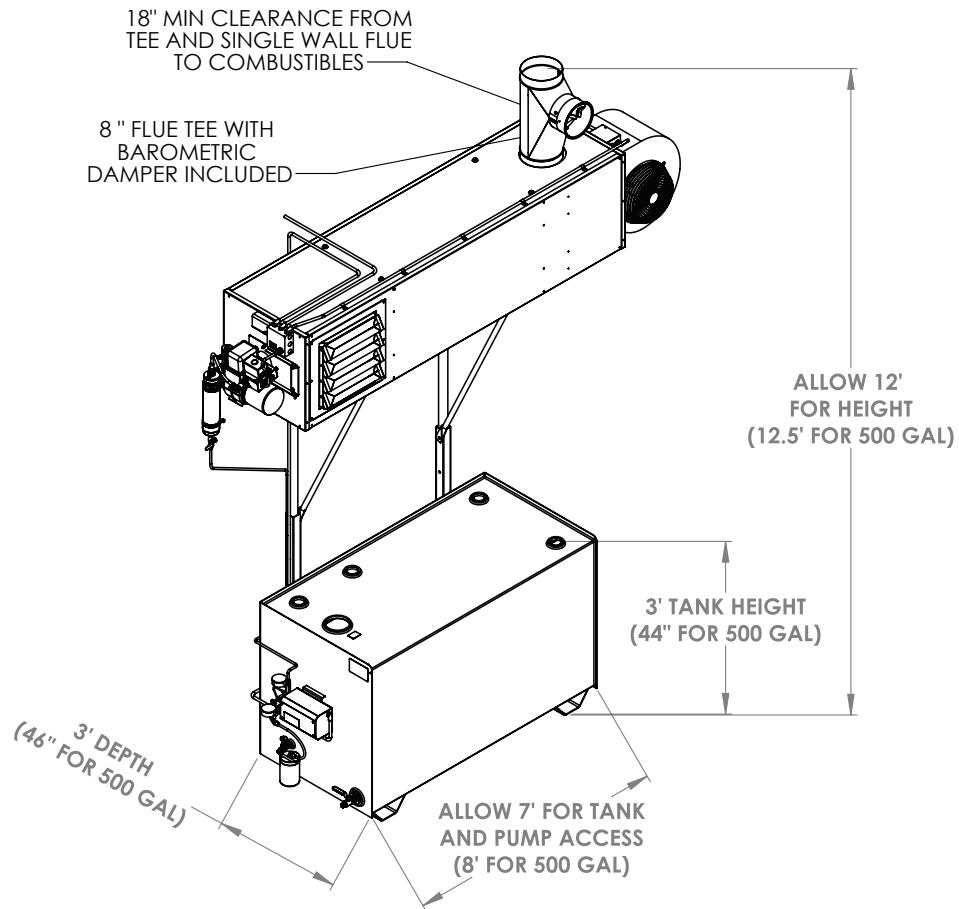


Model EL-350H

Shown with 250 gallon SW Tank

- **Cabinet Weight with Burner and Blower:** Approximate 415 lbs.
- **Tank Weight Empty:** Approximate 350 lbs (600 lbs for 500 gallon SW).
- **Flue Diameter:** 8".
- **Free Air Delivery:** ~2600 CFM.
- **Heating Area:** Approximate 9000 sq. ft. with 16' ceilings.







Waste Oil Heater Parts & Accessories

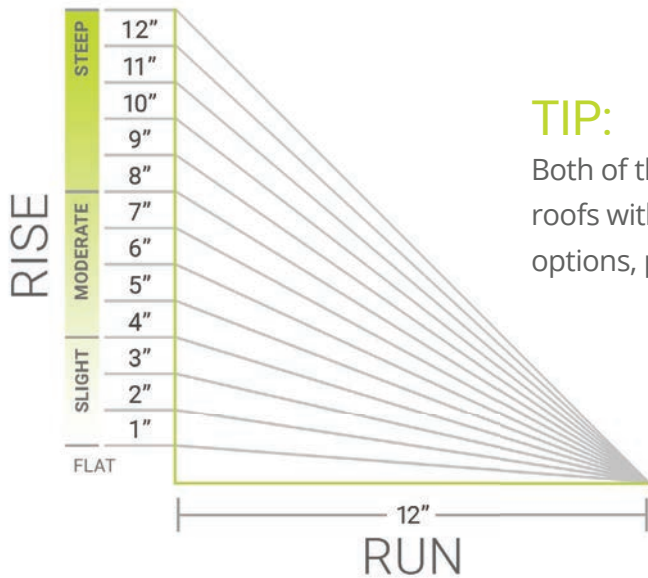


Flue Chimney Kits

EnergyLogic Chimney Flue Kits come with everything* you need to vent your waste oil heater exhaust through your shop's roof. These kits are designed for simplicity and are easy to install.



Item Number	Model	Description	Weight
ENLEL05000101	6" Flue Kit	6" - Flat to 12" Pitch Roof Kit	116 lbs
ENLEL05000107	8" Flue Kit	8" - Flat to 12" Pitch Roof Kit	125 lbs



TIP:

Both of the flue chimney kits available for purchase in this catalog fit roofs with a pitch ranging from 0" to 12". For other flue chimney kit options, please contact EnergyLogic directly.

*Additional flue piping may be necessary depending on the distance between the top of your unit and the roof.

Thermostats

STANDARD



Programmable Thermostat

- Weekday-weekend programmability allows for smart energy savings.
- Easy to set temperature for non-programmed use or temporary override.
- Preloaded with commonly used schedule presets.
- Easy-to-read backlit display.
- Long lasting power from 2 AAA batteries.

Item Number

20230178



SmartStat

- 7-day programmability allows for flexible schedules.
- Low-fuel cut-off maintains pump priming and alerts of fuel shortage.
- High vacuum alert indicates the need for filter change or clearing of the fuel pickup.
- Hour meter provides convenient access to heater runtime and regular service reminders.
- Burner lockout alert indicates the need to reset or service the burner.

Item Number

ENLEL05000136



WiFi Thermostat

- Easy-to-use color touchscreen.
- 7-day programmable for maximum schedule optimization and energy savings.
- Connects to Internet using your existing wireless router.
- Remote control via Honeywell Total Connect Comfort Website or mobile application including alerts if your heater loses power or falls outside of a specified temperature range.
- 24V AC-DC power transformer provides proper power to the thermostat from the heater's existing connection eliminating the need for batteries.

Item Number

05000192



SmartStat Wireless

- Combines the full functionality of the SmartStat with the convenience and connectivity of the WiFi Thermostat.
- Control your heater and receive SmartStat alerts in seconds from anywhere with the Honeywell Total Connect Comfort Website or mobile application.
- Brings robust, industrial grade wireless communication to your existing internet connection via Honeywell RedLINK wireless technology.
- Includes Remote Hour Meter for convenient access to heater runtime and regular service reminders.

Item Number

ENLEL05000179



Waste Oil Heater—Parts & Accessories



Heater Cleaning Tools

The fastest way to remove ash from your EnergyLogic waste oil heater every 1,000 hours of operation.

Item Number	Description
ENLEL14033227	Heater Cleaning Tool Assembly (140H, 200H, 340H)
ENLEL04000279	Heater Cleaning Tool Assembly (350H)



Wall Mount Brackets

Design specifically for EnergyLogic heaters, these heavy-duty supports are sized and pre-drilled to make proper installation even easier.

Item Number	Description
ENLEL05000087	Wall Mount Brackets



Louvers

Standard Louvers allow air outlets on both sides.
Multi-Directional Louvers can be adjusted horizontally & vertically.
Down Flow Vents direct air down toward your floor.

Item Number	Description
20331138	Louver - Standard (140H, 200H, 350H)
20331142	Louver - Multi-Directional (140H, 200H, 350H)
06000440	Louver - Down Flow Vent (140H, 200H, 350H)



Nozzles

Keep your burner nozzle clean and in working order to maximize combustion efficiency in your waste oil heater.

Item Number	Description
20210123	#5 Nozzle (140H, 200H)
20210124	#28 Nozzle (340H, 350H)



Electrode Kits

Combustion begins with a spark, and the spark in our waste oil burners begins at the electrode and retention head.

Item Number	Description
05000162	Electrode Kit (140H, 200H)
05000163	Electrode Kit (340H, 350H)



Heated Fuel Filter Wrap

To be used when the fuel that will pass through the spin-on filter is below 50°F / 10°C.

Item Number	Description
20503109	Heated Fuel Filter Wrap



Heater Maintenance Kits

Perform regular maintenance and replace consumable parts with this convenient kit. **Includes:** (1) Air Compressor Filter, (1) 5" Spin-on, Stainless Steel Mesh Filter, (1) Solenoid Valve O-ring, (1) Burner Gasket, (2) Preheater Gaskets 2-5/8", (1) Nozzle, (1) Drip Cap Gasket, (2) Zip-Tie.

Item Number	Description
05000027	Heater Maintenance Kit (140H, 200H)
05000028	Heater Maintenance Kit (340H, 350H)



Top Suction Kits

Save time, money and increase reliability when delivering fuel from the top of the tank. This kit combines fuel pick-up with a low fuel cut off switch. The springless foot valve prevents loss of prime during long off cycles.

Item Number	Description
ENLEL05000165	Top Suction Kit (140H, 200H)
ENLEL05000169	Top Suction Kit (350H)

Waste Oil Heater—Parts & Accessories



Air Compressor Silencer Kit

This kit provides a clearly noticeable reduction in sound by 6dB. Simple to install and replaces the standard inlet and outlet components of the air compressor.

Item Number	Description
05000111	Air Compressor Silencer Kit

Air Compressor Filter



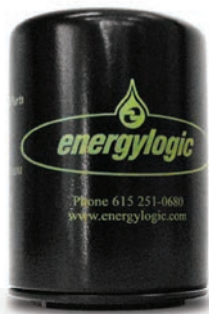
Air Compressor Silencer Filter



Air Compressor Filters

The **Air Compressor Filter** filters the air going into the air compressor to prevent issues caused by debris being ingested. The **Air Compressor Silencer Filter** is the replacement silencer filter for the air compressor silencer kit.

Item Number	Description
20210112	Air Compressor Filter
06000150	Air Compressor Silencer Filter



Spin-On Filter

Stainless steel mesh, hydraulic filter designed for use with waste oil. Removes particles to protect the pump and downstream hardware. Easily installs on the EnergyLogic filter head assembly.

Item Number	Description
ENLEL20270185	Spin-On Filter
ENLEL05000052	Case of Spin-On Filters (12 pack)



Draft Gauge Assembly

Allows you to measure the draft (negative pressure created by the exhaust gases going up the flue). The draft can be adjusted with the Tee and Damper Door assembly. Setting the proper draft is important to keep the correct fuel/air ratio for good combustion.

Item Number	Description
14070198	Draft Gauge Assembly



Fuel Line High Point Bleed

Use a high point bleed to purge air from the fuel system when the fuel piping is routed with high points which can trap air.

Item Number	Description
14070240	Fuel Line High Point Bleed



Digital Remote Hour Meter Kit

The remote hour meter provides a readout of the total run hours, the run hours since the last service, and a service due light, mounted at eye level, so you don't have to climb a ladder to know it is time to service your heater.

Item Number	Description
05000183	Digital Remote Hour Meter Kit



Chimney Flue Pipes

Class A, double-wall, insulated, flue pipe to carry the hot combustion exhaust outside the building above the roof.

Item Number	Description
ENLEL06000087	Chimney Flue Pipe 6" ID Double Wall x 36"
20702143	Chimney Flue Pipe 8" ID Double Wall x 36"



Chimney Flue Cleaning Brushes

These brushes are carefully selected to perform most common flue/chimney cleaning.

Item Number	Description
ENLEL06000084	6" Chimney Flue Cleaning Brush (140H, 200H)
ENLEL20092100	8" Chimney Flue Cleaning Brush (140H, 200H, 340H, 350H)
ENLEL20092102	10" Chimney Flue Cleaning Brush (500B)



Waste Oil Tanks

42.2"L x 30.8"W x 32"H
320 lbs / 145 kg



130gal. Waste Oil Tank

Waste oil storage tank designed for use with your EnergyLogic heater or boiler. The tank is single-wall, welded steel construction. This space saving 130 gallon tank can mount a 140H or 200H.

Item Number	Description
ENLEL03130102	130gal. Waste Oil Smart Tank Workbench-Single Wall (140H, 200H)

49.5"L x 31.9"W x 38"H
350 lbs / 161 kg

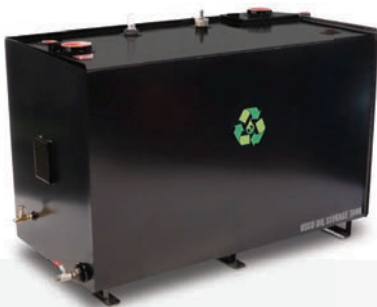


200gal. Waste Oil Tanks

Waste oil storage tank designed for use with your EnergyLogic heater or boiler. The tank is single-wall, welded steel construction. This space saving 200 gallon tank can mount all EnergyLogic model heaters.

Item Number	Description
03200102	200gal. Waste Oil Smart Tank Workbench

Single Wall 62"L x 31.9"W x 38"H | 355 lbs (161 kg)
Double Wall 65.3"L x 32.2"W x 40.2"H | 748 lbs (339 kg)



250gal. Waste Oil Tanks

Waste oil storage tank designed for use with your EnergyLogic heater or boiler. The tank is single-wall (double-wall option available), welded steel construction. This 250 gallon tank can be used to mount all the EnergyLogic model heaters.

Item Number	Description
ENLEL03250102	250gal. Waste Oil Smart Tank Workbench
ENLEL03250204	250gal. Waste Oil Smart Tank Workbench-Double Wall

Single Wall 73.7"L x 42.5"W x 45.8"H | 662 lbs (300 kg)
Double Wall 89.9"L x 45.2"W x 38.8"H | 1,169 lbs (530 kg)



500gal. Waste Oil Tanks

Waste oil storage tank designed for use with your EnergyLogic heater or boiler. The tank is single-wall (double-wall option available), welded steel construction. This 500 gallon tank can be used to mount all the EnergyLogic model heaters.

Item Number	Description
ENLEL03500102	500gal. Waste Oil Smart Tank Workbench
ENLEL03500203	500gal. Waste Oil Smart Tank Workbench-Double Wall

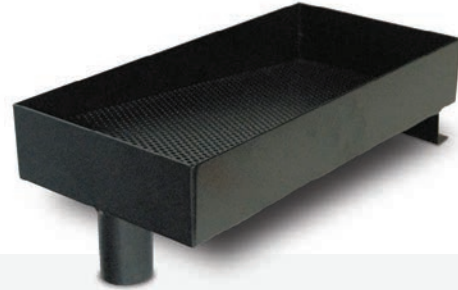
Waste Oil Tank Accessories



Fuel Transfer Pump

Quickly transfer fuel for easy collection and supply management.

Item Number	Description
20202129	Fuel Transfer Pump 4.25GPM - Electric



Filter Drain Pans

Used as a funnel for draining and screening used oil from filters or components into the storage tank.

Item Number	Description
ENLEL20352225	Filter Drain Pan - Small 9" x 18"
ENLEL20352226	Filter Drain Pan - Large 16" x 18"



Waste Oil Storage Tote

Our waste oil storage totes are great for keeping surplus waste oil neatly contained and easy to access. *Not to be used as supply tank for either heater or boiler.

Item Number	Description
07000001	Plastic Storage Tote (275 gallons)



Emergency Vent Cap - 4"

Opens to relieve pressure build up in tank to prevent tank explosion in the event of a fire or other unusual event. Often required by fire codes.

Item Number	Description
ENLEL20252174	Emergency Vent Cap - 4"





Waste Oil Boilers



Waste Oil Boiler Product Details

STANDARD

ASME Certified Vessel Construction

The only boiler vessel built specifically for waste oil from the ground up. Our heavy carbon-steel construction is stronger and more efficient than cast-iron and coil-tube boilers provided by other brands.

STANDARD

Safety

- Low water cut off
- High temperature limit
- Pressure relief valve
- Triple aquastat

Optional Integrated Domestic Hot Water Coil

An open loop domestic coil can be added to run closed and open loops simultaneously. Provides hot water for restrooms, carwash, dishwashers, and more. Unit can operate as a stand-alone system using the hot water coil.

EXCLUSIVE

Removable Rear Panel

Speeds and simplifies straight-through cleaning (see below).

STANDARD

Digital Hour Meter

Tracks runtime.



STANDARD

Wet Floor Based Heat Exchanger

Water-cooled heat exchanger prevents hot spots and deterioration.

STANDARD

Small Footprint

Saves space and makes installation simpler and more flexible with unit stacking and flue options.

PATENTED

Metering Fuel Pump

Reliable, consistent fuel delivery regardless of fuel type (up to 90W) with no manual adjustments.

PATENTED

Accutemp Preheater

Rapidly heats the widest viscosity range of used oil, synthetic oil, and other acceptable fuels.

STANDARD

Integrated Air Compressor

Built in so you don't have to connect to and rely on shop air, providing 24/7 heating availability.

Pictured:

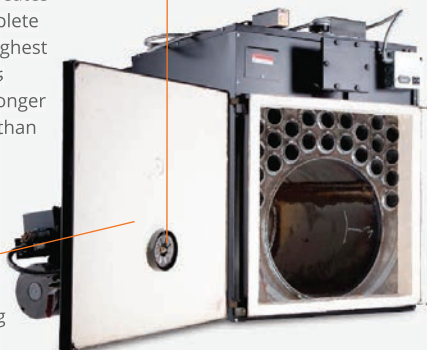
EL375B Waste Oil Boiler

Easy Access & Maintenance

PATENTED

Flame Retention Head

This patented design creates a hotter flame for complete fuel combustion and highest heat output. Less ash is produced resulting in longer maintenance intervals than competing brands.



STANDARD

Swing Open Boiler Door

Easy access to the firing chamber for cleaning.

Advanced Features

AquaSmart™ Technology

Built-in memory & system history provides diagnostics for efficient operation.

Dynamic Temperature Reset

Dynamic temperature reset decreases fuel consumption by up to 20%.

Backlit Display + Touch-Pad

Back-lit LCD display with touch-pad makes programming temperature limits, differentials and other options easy.

Pressure Gauge

Analog pressure gauge continually displays conditions.



Waste Oil Boiler Units & Complete Systems

The EL-200B Waste Oil Boiler



Model 200B	
Item Number	ENL02200101
BTU's	200,000 BTU
Heats Up to	~4,000 sq ft
Weight	790 lbs
Boiler Dimensions	45" H x 32" W x 50" D
Fuel Flow Rate	1.4 gallon/hour

The EL-375B Waste Oil Boiler



Model 375B	
Item Number	ENLEL02375101
BTU's	375,000 BTU
Heats Up to	~7,500 sq ft
Weight	1,042 lbs
Boiler Dimensions	42" H x 28" W x 60" D
Fuel Flow Rate	2.7 gallons/hour

The EL-500B Waste Oil Boiler



Model 500B	
Item Number	ENLEL02499101
BTU's	499,000 BTU
Heats Up to	~10,000 sq ft
Weight	1,160 lbs
Boiler Dimensions	45" H x 32" W x 68" D
Fuel Flow Rate	3.6 gallons/hour



Complete Systems

EnergyLogic Complete Systems are the simplest, most cost-effective solution for turning waste oil into free heat. Packaged units are shipped largely preassembled and include side suction mounted pumps on the tank, a tank mounting kit to attach the boiler and a flue kit.

Item Number	Model	Description	Weight
ENL02200103	200B	200,000 BTU Boiler, 250 Gallon Tank, 8" Flue Kit, Mixing Valve	1220 lbs
ENL02375103	375B	375,000 BTU Boiler, 250 Gallon Tank, 8" Flue Kit, Mixing Valve	1458 lbs
ENL02499103	500B	500,000 BTU Boiler, 250 Gallon Tank, 8" Flue Kit, Mixing Valve	1665 lbs

Optimum performance to heat water for multiple applications:
In-floor radiant heat, ice melt, hot water for car-wash, potable water, built in capability to run open and closed loop systems.

Operating Pressure
Low pressure, 30 psi.

Approved Fuels
Used crankcase oils, ATF, No. 2 fuel oil, up to 90 weight gear oil and diesel fuel.

Electrical Requirement
115 VAC 60Hz, 25 amps | maximum dedicated circuit.

Warranty
10 years on boiler vessel, five years full and five years prorated Up to 2 years on parts**.

Regulation and Certification
EPA-approved, UL-listed system, ASME-certified vessel, Canadian Registration (CRN) available in approved provinces for waste oil heating.

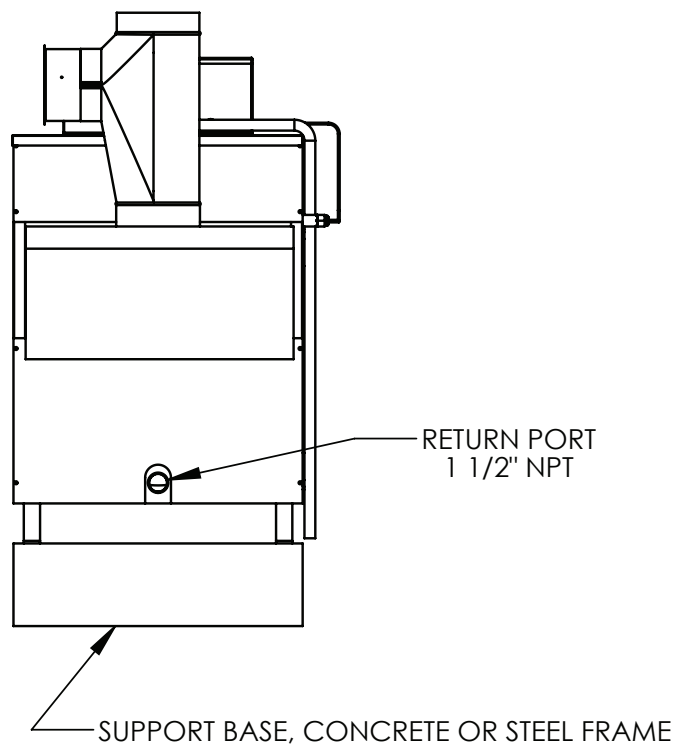
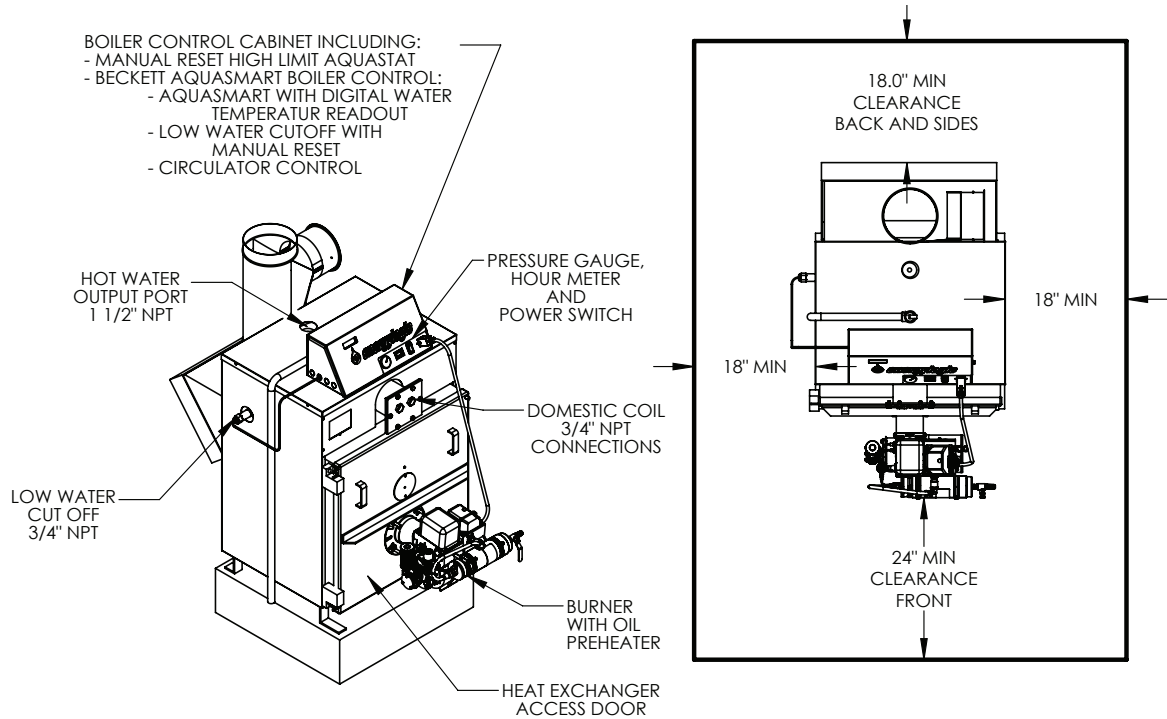


**One Year warranty standard. Second year warranty requires product registration within 30 days of product receipt.



Model EL-200B

- **UL Listed**, ASME Certified Boiler.
- **Fire Tube:** Water is heated by hot gases flowing through 25 horizontal tubes.
- **Wet Based:** Combustion chamber and tubes completely surrounded by water.
- **Non-Condensing:** Hot gases not allowed to cool, thereby reducing condensation.
- **Material:** ASME Certified 1/4" carbon steel.
- **Boiler Water Capacity:** 30 gal.
- **Water Pressure:** 30 psi max.
- **Inlet Water Temperature:** 140°F min.
- **Operating Temperature:** 230°F max.
- **Domestic Hot Water Coil Rating:** 4.0 GPM max.
- **Boiler Weight with Burner:** Approx. 662 lbs.
- **Wet Weight:** Approx. 1,000 lbs.



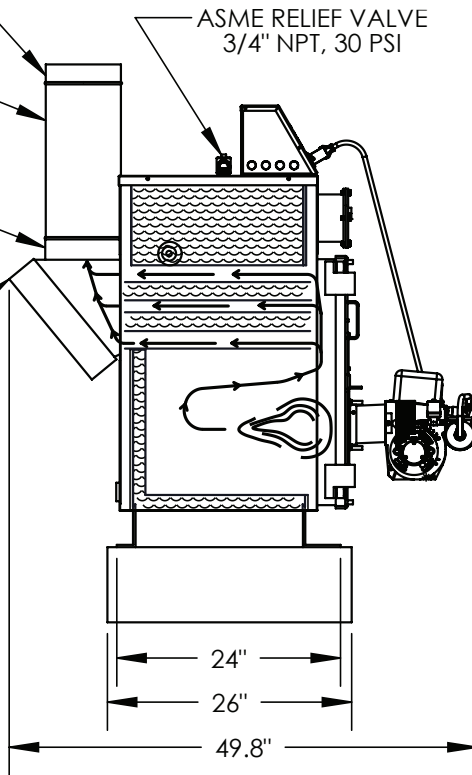
18" CLEARANCE FROM SINGLE WALL FLUE TO COMBUSTIBLES

FLUE TEE WITH BAROMETRIC DAMPER

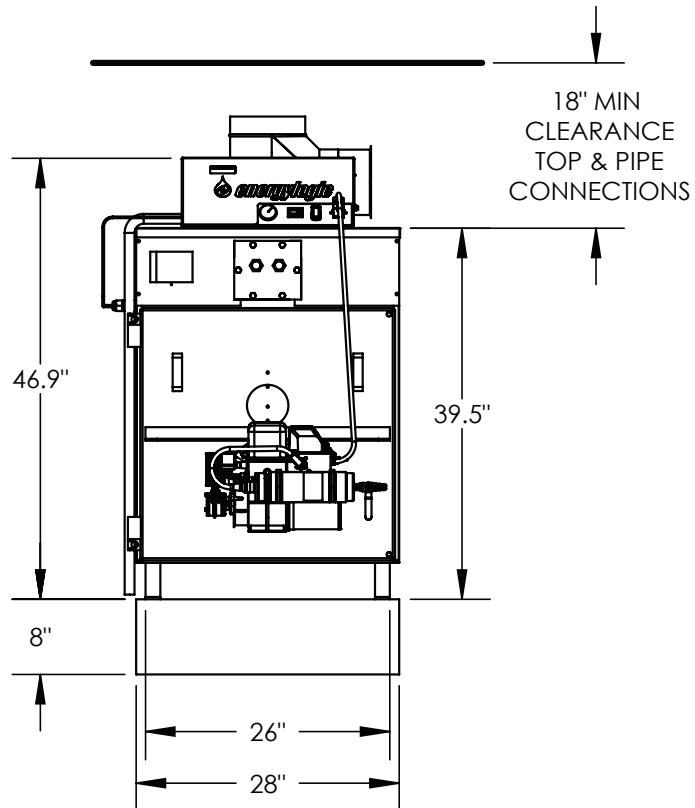
8" FLUE

BREECH CLEAN OUT COVER

ASME RELIEF VALVE
3/4" NPT, 30 PSI

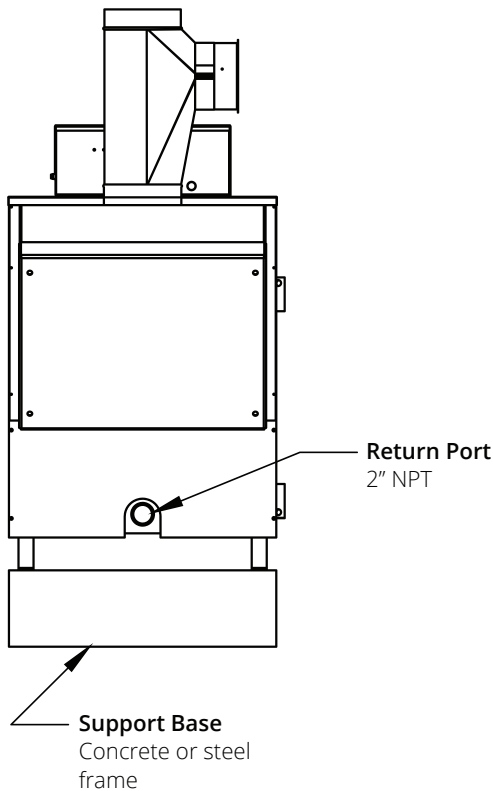
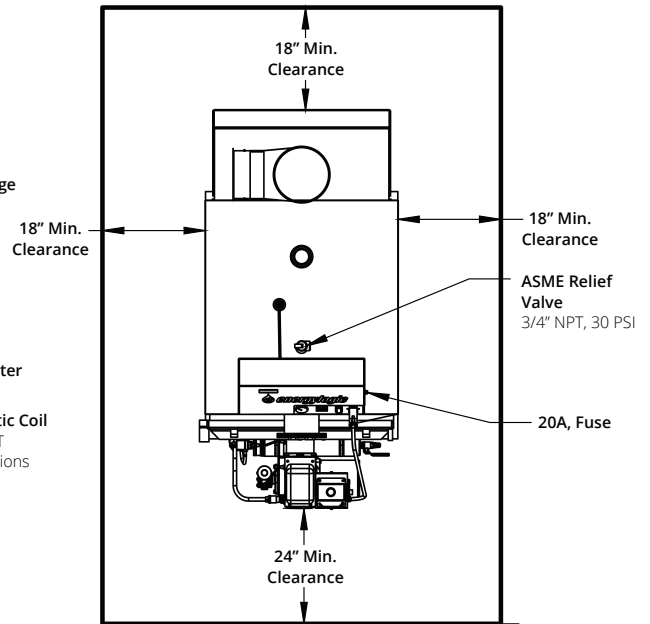
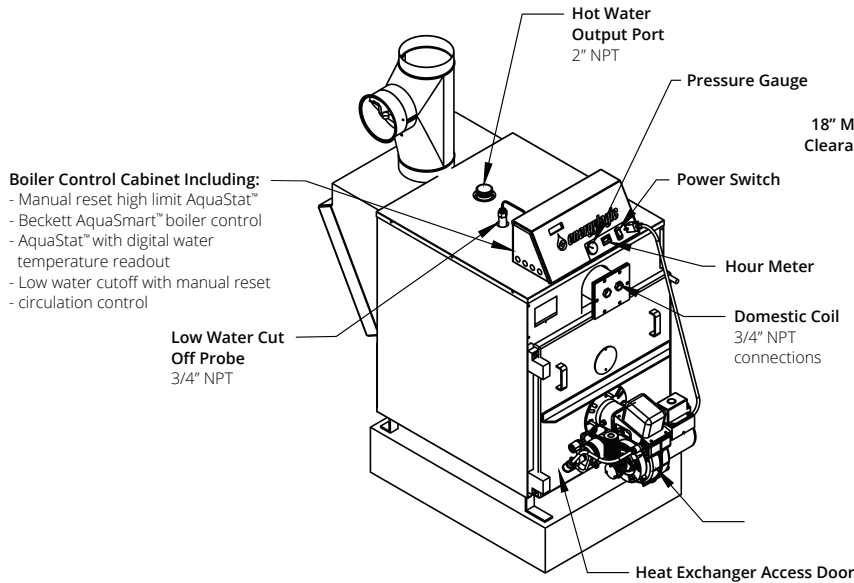


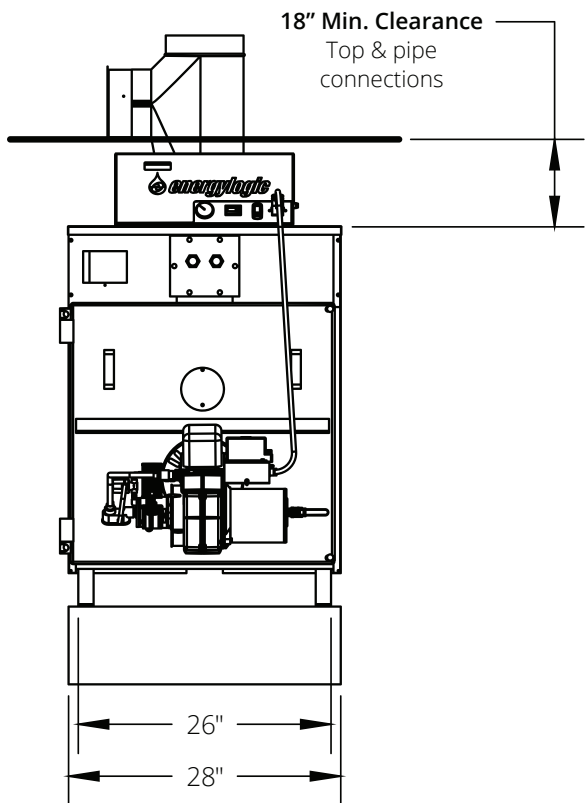
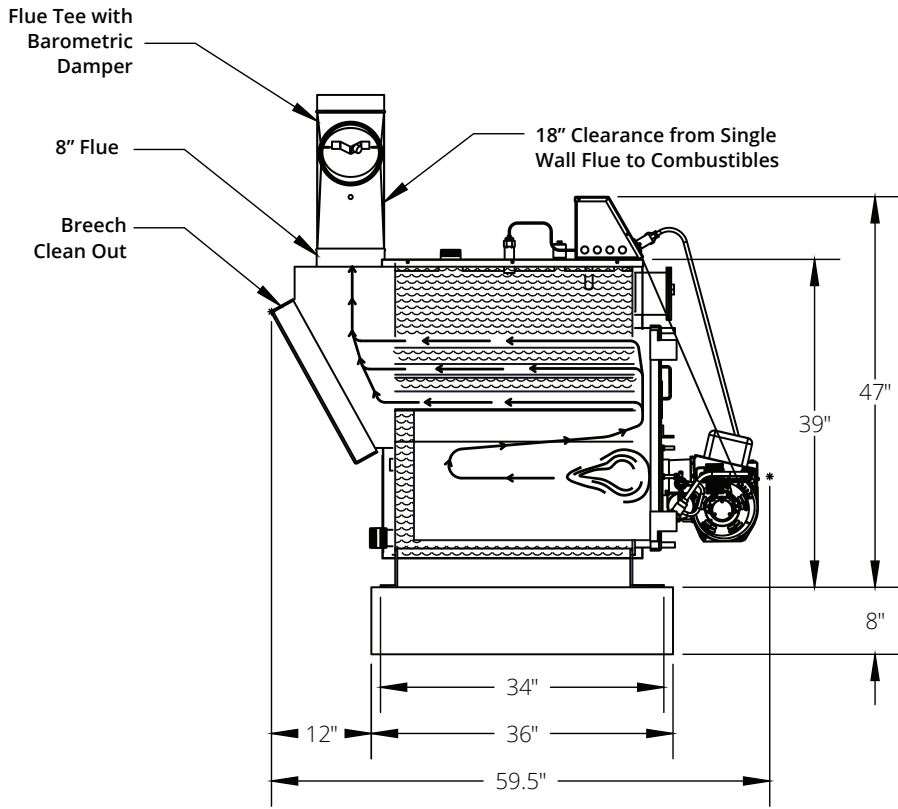
18" MIN
CLEARANCE
TOP & PIPE
CONNECTIONS



Model EL-375B

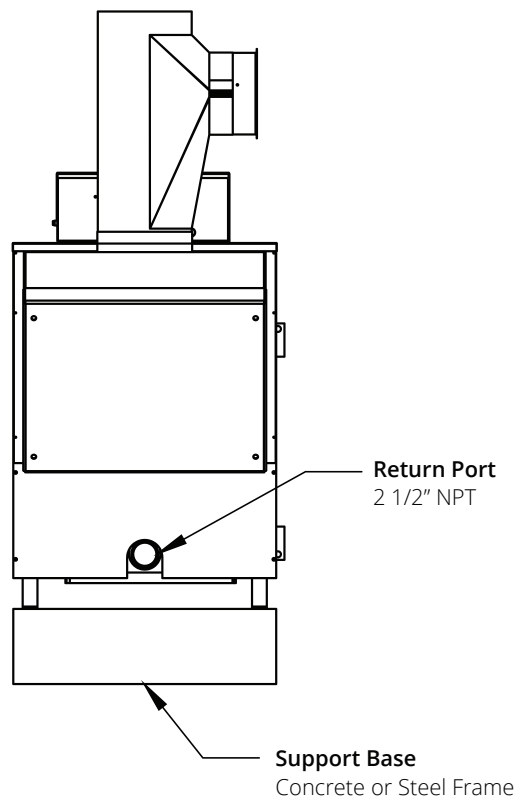
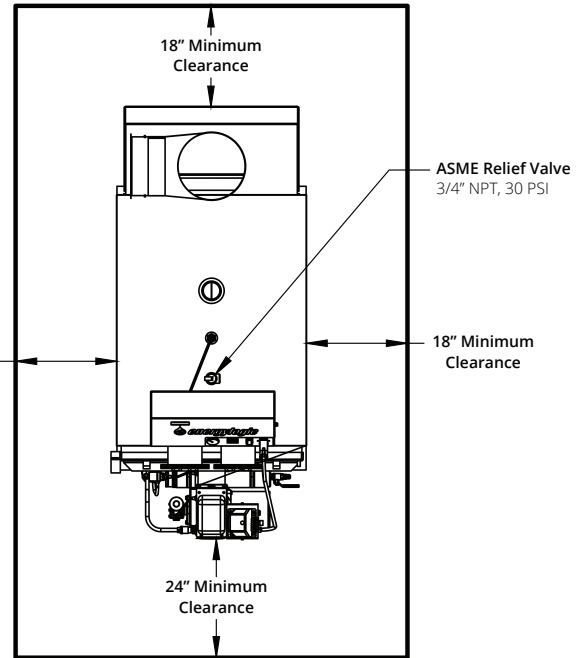
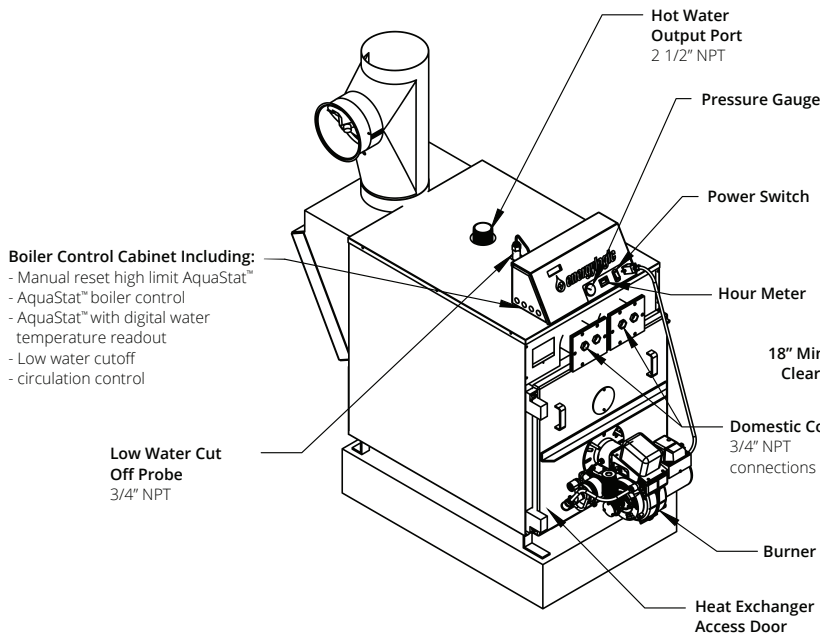
- **UL Listed**, ASME Certified Boiler.
- **Fire Tube:** Water is heated by hot gases flowing through 24 horizontal tubes.
- **Wet Based:** Combustion chamber and tubes completely surrounded by water.
- **Non-Condensing:** Hot gases not allowed to cool, thereby reducing condensation.
- **Material:** ASME Certified 1/4" carbon steel.
- **Boiler Water Capacity:** 43 gal.
- **Water Pressure:** 30 PSI max.
- **Inlet Water Temperature:** 140°F min.
- **Operating Temperature:** 230°F max.
- **Domestic Hot Water Coil Rating:** 6.0 GPM max.
- **Boiler Weight with Burner:** Approx. 1,025 lbs.
- **Wet Weight:** Approx. 1,450 lbs.

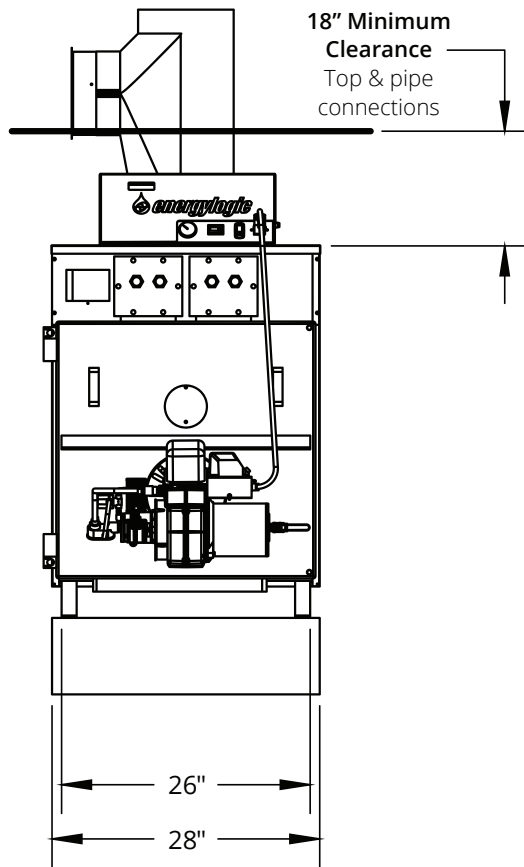
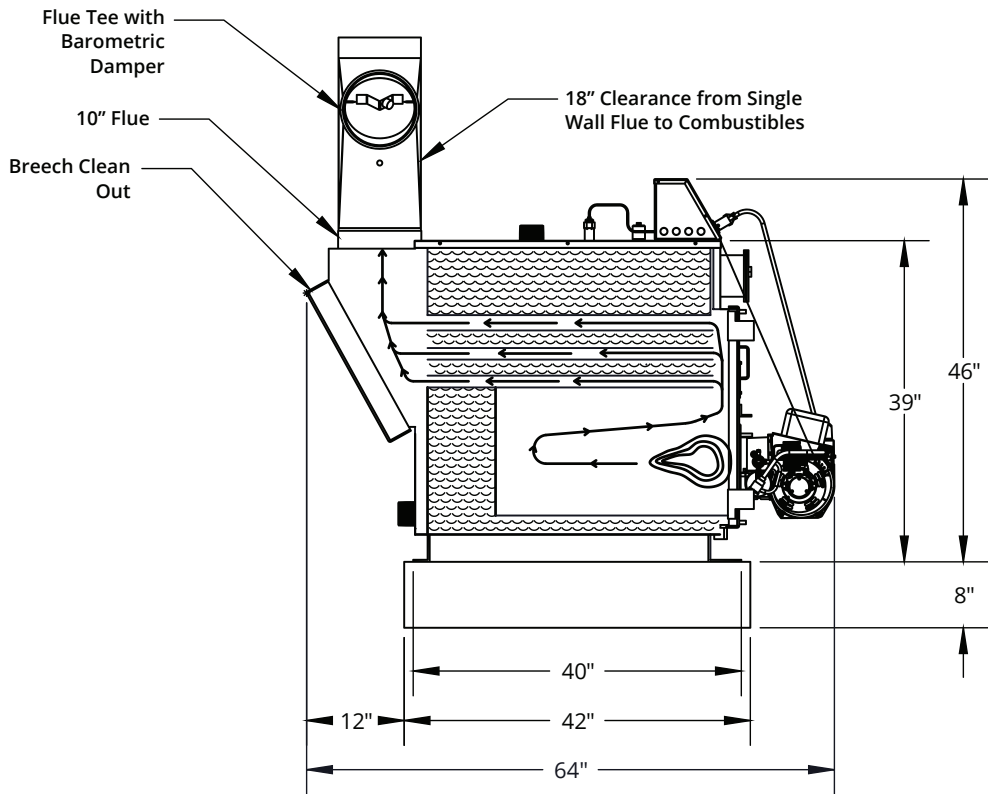




Model EL-500B

- **UL Listed**, ASME Certified Boiler.
- **Fire Tube**: Water is heated by hot gases flowing through 24 horizontal tubes.
- **Wet Based**: Combustion chamber and tubes completely surrounded by water.
- **Non-Condensing**: Hot gases not allowed to cool, thereby reducing condensation.
- **Material**: ASME Certified 1/4" carbon steel.
- **Boiler Water Capacity**: 52 gal.
- **Water Pressure**: 30 PSI max.
- **Inlet Water Temperature**: 140°F min.
- **Operating Temperature**: 230°F max.
- **Domestic Hot Water Coil Rating**: 16 GPM max.
- **Boiler Weight with Burner**: Approx. 1,300 lbs.
- **Wet Weight**: Approx. 2,000 lbs.









Waste Oil Boiler Parts & Accessories



Waste Oil Boiler—Parts & Accessories



Boiler Cleaning Tools

Clean ash from boiler tubes using brushes designed specifically for EnergyLogic waste oil boilers.

Item Number	Description
ENLEL20092104	1.75" Boiler Tube Brush (200B)
ENLEL20092106	2" Boiler Tube Brush (375B, 500B)
05000189	Boiler Brush Kit (200B)
05000190	Boiler Brush Kit (375B, 500B)



Mixing Valve Kits

Mixing valves insure that water returns to the boiler at the correct temperature. Kits include a mixing valve, two pressure gauges and instructions.

Item Number	Description
ENLEL05000072	1" Mixing Valve Kit (200B, 375B)
ENLEL05000073	1.5" Mixing Valve Kit (500B)



Domestic Hot Water Coils

Domestic Coils are used when the hydronic system requires an open-loop section where heated water is not returned to the closed-loop boiler system.

Item Number	Description
20362189	Domestic Hot Water Coil, 4 GPM (200B)
20362188	Domestic Hot Water Coil, 6 GPM (375B)
20362190	Domestic Hot Water Coil, 8 GPM (500B)



Electrode Kits

Combustion begins with a spark, and the spark in our waste oil burners begins at the electrode and retention head.

Item Number	Description
05000162	Electrode Kit (200B)
05000164	Electrode Kit (375B, 500B)



Boiler Maintenance Kits

Perform regular maintenance and replace consumable parts with this convenient kit. **Includes:** (1) Air Compressor Filter, (1) Spin-on, Stainless Steel Mesh Filter, (2) Solenoid Valve O-ring, (1) Boiler Burner Gasket, (2) Preheater Gaskets 2-5/8", (1) Nozzle.

Item Number	Description
5000029	Boiler Maintenance Kit (200B)
5000030	Boiler Maintenance Kit (375B, 500B)



Fuel Line High Point Bleed

Use a high point bleed to purge air from the fuel system when the fuel piping is routed with high points which can trap air.

Item Number	Description
14070240	Fuel Line High Point Bleed



Top Suction Kits

Save time, money and increase reliability when delivering fuel from the top of the tank. This kit combines fuel pick-up with a low fuel cut off switch. The springless foot valve prevents loss of prime during long off cycles.

Item Number	Description
ENLEL05000165	Top Suction Kit (200B)
ENLEL05000169	Top Suction Kit (375B, 500B)



Digital Remote Hour Meter Kit

The remote hour meter provides a readout of the total run hours, the run hours since the last service, and a service due light, mounted at eye level, so you don't have to climb a ladder to know it is time to service your heater.

Item Number	Description
05000183	Digital Remote Hour Meter Kit



Waste Oil Boiler—Parts & Accessories



Heated Fuel Filter Wrap

To be used when the fuel that will pass through the spin-on filter is below 50°F / 10°C.

Item Number	Description
20503109	Heated Fuel Filter Wrap



Chimney Flue Cleaning Brush

These brushes are carefully selected to perform most common flue/chimney cleaning.

Item Number	Description
ENLEL20092100	8" Chimney Flue Cleaning Brush (200B, 375B)
ENLEL20092102	10" Chimney Flue Cleaning Brush (500B)



Chimney Flue Pipes

Class A, double-wall, insulated, flue pipe to carry the hot combustion exhaust outside the building above the roof.

Item Number	Description
ENLEL06000087	Chimney Flue Pipe 6" ID Double Wall x 36"
ENLEL20702143	Chimney Flue Pipe 8" ID Double Wall x 36"



Draft Gauge Assembly

Allows you to measure the draft (negative pressure created by the exhaust gases going up the flue). The draft can be adjusted with the Tee and Damper Door assembly. Setting the proper draft is important to keep the correct fuel/air ratio for good combustion.

Item Number	Description
14070198	Draft Gauge Assembly



Air Compressor Silencer Kit

This kit provides a clearly noticeable reduction in sound by 6dB. Simple to install and replaces the standard inlet and outlet components of the air compressor.

Item Number	Description
05000111	Air Compressor Silencer Kit



Air Compressor Silencer Filter

The replacement silencer filter for the air compressor silencer kit.

Item Number	Description
06000150	Air Compressor Silencer Filter



Air Compressor Filter

Filters the air going into the air compressor to prevent issues caused by debris being ingested.

Item Number	Description
20210112	Air Compressor Filter

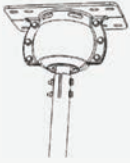


The image features two long, thin, grey fan blades positioned horizontally across the upper half of the frame. The blades are slightly curved and have a dark, possibly black, edge. The background is a light, neutral color with a large, faint, stylized graphic of a fan blade or a similar shape in the lower right quadrant. The text 'HVLS Fans' is centered in the middle of the page, below the blades.

HVLS Fans

AirVolution-D Fan Specs & Mounting Guide

Fan Mounting Guide



Rapid Mount Industrial

Standard for: n/a

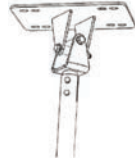
Optional for: 550, 780, AVD3-450

Drop Length: Up to 10ft.

Application: Indoor/Outdoor

Guy Wires: No*

Features: Accommodates multiple roof angles. Accelerometer measures the fan's angle and will shut the fan off if it shifts more than 5°.



Universal Mount

Standard for: 550, 780

Optional for: 370, AVD3-430 & 450

Drop Length: 370 – up to 10ft.

AVD3, 550, 780 – up to 15ft.

Application: Indoor/Outdoor

Guy Wires: Yes

Features: Accommodates multiple roof angles.



Rapid Mount Commercial

Standard for: 370

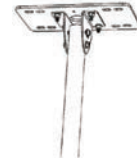
Optional for: n/a

Drop Length: Up to 5ft.

Application: Indoor

Guy Wires: No

Features: Accommodates multiple roof angles.



Fixed Angle Mount

Standard for: AVD3-430 & 450

Optional for: 370

Drop Length: Up to 10ft.

Application: Indoor/Outdoor

Guy Wires: Yes

Features: Accommodates one roof angle.

* Depending on building structure this mount may require guy wires.

Note: Noise dampener is suggested with Universal Mount & Rapid Mount Industrial to minimize vibration and thereby reduce noise.

AirVolution-D 370

Model 370 – 6 Blade HVLS Fan ideal for smaller spaces with lower ceilings.



Item No.	Voltage	Blade Diameter	Horsepower	Hanging Weight	RPM	Industry Spacing
ENLEL06000875	110V-220V	12 ft.	.25 HP	74 lbs.	65.2	48 ft.
ENLEL06000873	110V-220V	10 ft.	.25 HP	65 lbs.	93.5	40 ft.
ENLEL06000871	110V-220V	8 ft.	.25 HP	59 lbs.	140	36 ft.
ENLEL06000869	110V-220V	6 ft.	.25 HP	52 lbs.	140	28 ft.

Available in: 110V-220V +/-5% Single Phase.

Includes: Fan, Mounting Bracket, Variable-Speed Digital Touch Screen Controller, 50 ft. CAT5 Cable.

AirVolution-D3 (430)

Model 430* – 3 Blade HVLS Fan perfect for large spaces that need broad air distribution.

Including: auto shops, gyms, and agricultural applications.



Item No.	Voltage	Blade Diameter	Horsepower	Hanging Weight	RPM	Industry Spacing
ENLEL06000953	208V-240V	24 ft.	1.05 HP	162 lbs.	63	95 ft.
ENLEL06000952	208V-240V	20 ft.	1.05 HP	149 lbs.	81	90 ft.
ENLEL06000951	208V-240V	18 ft.	1.05 HP	145 lbs.	87	80 ft.
ENLEL06000950	208V-240V	16 ft.	1.05 HP	141 lbs.	91	75 ft.
ENLEL06000949	208V-240V	14 ft.	1.05 HP	137 lbs.	118	70 ft.
ENLEL06000948	208V-240V	12 ft.	1.05 HP	133 lbs.	135	60 ft.
ENLEL06001064	208V-240V	10 ft.	1.05 HP	129 lbs.	166	55 ft.

*Can upgrade to the AVD3-450 / 110-277V or 380-600V, no guy wires for additional fee.

Available in: 208V-240V +/-5% Single Phase and Three Phase; High Voltage 460V-480V +/- 5% Three Phase.

Includes: Fan, I-Beam Mounting Hardware, Variable-Speed Digital Touch Screen Controller, 100 ft. CAT5 Cable, Guy Wire Kit.



Rotation Innovation

After inventing the HVLS fan category that would inspire countless imitators, what's a company to do next?

Do it again, only better.

Featuring transverse flux direct-drive technology with only two moving parts and five times the power, the AirVolution-D from MacroAir is efficient and elegant, perfect for both indoor and outdoor applications.

More Benefits:



Cut Energy Bills

Save up to 30% in summer, and redistributes heat in winter.



Increased Productivity

Increases employee productivity.



Silent Operation

Runs silently, 24/7 for cents.



Dust Safe

Our fans' motors operate in high dust environments, and are easy to clean.



Longest Warranty

50,000 hour warranty—longest in industry.



Moisture Resistant

Strong enough for pressure washing.



AirVolution-D 550

Model 550 – 6 Blade HVLS Fan that is ideal for larger locations like auto shops, gyms, and agricultural applications.

Item No.	Voltage	Blade Diameter	Horsepower	Hanging Weight	RPM	Industry Spacing
ENLEL06000888	380V-600V	18 ft.	1.05 HP	188 lbs.	74	95 ft.
ENLEL06000887	120V-277V	18 ft.	1.05 HP	188 lbs.	74	95 ft.
ENLEL06000886	380V-600V	16 ft.	1.05 HP	180 lbs.	90	90 ft.
ENLEL06000885	120V-277V	16 ft.	1.05 HP	180 lbs.	90	90 ft.
ENLEL06000884	380V-600V	14 ft.	1.05 HP	172 lbs.	110	80 ft.
ENLEL06000883	120V-277V	14 ft.	1.05 HP	172 lbs.	110	80 ft.
ENLEL06000882	380V-600V	12 ft.	1.05 HP	162 lbs.	137	70 ft.
ENLEL06000881	120V-277V	12 ft.	1.05 HP	162 lbs.	137	70 ft.
ENLEL06000880	380V-600V	10 ft.	1.05 HP	153 lbs.	170	65 ft.
ENLEL06000879	120V-277V	10 ft.	1.05 HP	153 lbs.	170	65 ft.
ENLEL06000878	380V-600V	8 ft.	1.05 HP	144 lbs.	220	60 ft.
ENLEL06000877	120V-277V	8 ft.	1.05 HP	144 lbs.	220	60 ft.

Available in: 120V-277V +/-5% Single Phase and Three Phase; High Voltage 380V-600V +/-5% Single and Three Phase.

Includes: Fan, I-Beam Mounting Hardware, Variable-Speed Digital Touch Screen Controller, 100 ft. CAT5 Cable, Guy Wire Kit.

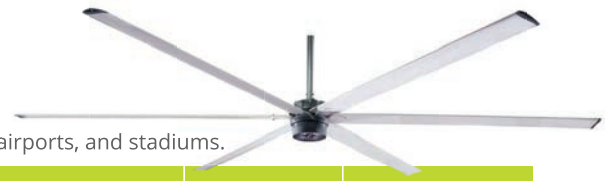
AirVolution-D 780

Model 780 – 6 Blade HVLS Fan perfect for extra-large spaces like warehouses, hangars, airports, and stadiums.

Item No.	Voltage	Blade Diameter	Horsepower	Hanging Weight	RPM	Industry Spacing
ENLEL06000892	380V-600V	24 ft.	2.1 HP	239 lbs.	64	115 ft.
ENLEL06000891	208V-277V	24 ft.	2.1 HP	239 lbs.	64	115 ft.
ENLEL06000890	380V-600V	20 ft.	2.1 HP	214 lbs.	75	105 ft.
ENLEL06000889	208V-277V	20 ft.	2.1 HP	214 lbs.	75	105 ft.

Available in: 208V-277V +/-5% Single and Three Phase; High Voltage 380V-600V +/-5% Single and Three Phase.

Includes: Fan, I-Beam Mounting Hardware, Variable-Speed Digital Touch Screen Controller, 100 ft. CAT5 Cable, Guy Wire Kit.





Small Space Solution

Ideal for ceiling heights as low as 12 ft, the AirVolution-D 370 is remarkably quiet. Its next generation motor design eliminates the gearbox, resulting in reduced noise, zero maintenance, and easy installation. Sleek looks and custom color options add to its appeal, allowing it to blend with any setting. For small spaces like offices, restaurants and lobbies, the AirVolution-D 370 is a perfect fit.

Key Specs

- Airfoil sizes 6 to 12 ft. integrate into any small space.
- Airfoils also available in black and oak woodgrain.
- On-board AirBrain optimizes motor control.
- No gearbox means quiet operation and no maintenance.
- Wash Down Duty rated for indoor/outdoor use (IP65).
- Backed by a 50,000-hour-warranty.

Touchscreen Remote



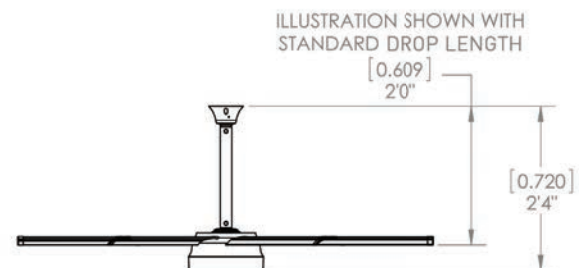
- 20 speed settings
- Forward and reverse
- Integrated warranty hour counter

Warranty

Standard 50,000-hour non-prorated warranty on parts and components. Plus a 3-year warranty on labor.

Mounting Dimensions

Illustration shown with standard extension:



Basic Specifications

Airfoil (Blade) Diameter	6 ft.	8 ft.	10 ft.	12 ft.
Airfoil Type	Extruded Anodized Aluminum Airfoils			
Airfoil Width	4.5"			
Number of Airfoils	6			
Performance				
Variable Speed	1 - 140 RPM	1 - 140 RPM	1 - 93.5 RPM	1 - 65.2 RPM
Recommended Industry Spacing *	28 ft.	36 ft.	40 ft.	48 ft.
Sound Level dBA at 100% Speed **	40	48	44	41
Weights				
Hanging Weight	52 lbs.	59 lbs	65 lbs	74 lbs
Motor and Drive Train				
Motor Type	Gearless Direct Drive			
Equivalent Horsepower Rating	0.25 HP			
Max Operating Temperature	140°F (60°C)			
Max Amp Draw / Recommended Fuse				
110 VAC 1-Phase	1.5 A / 5	5.9 A / 10	3.8 A / 5	2.0 A / 5
120 VAC 1-Phase	1.4 A / 5	5.4 A / 10	3.5 A / 5	1.8 A / 5
208 VAC 1-Phase	0.8 A / 5	3.1 A / 10	2.0 A / 5	1.0 A / 5
Power & Controls				
Power Source High	n/a			
Power Source Low	1-Phase 110 or 220 VAC +/-5%			
Control Options	Digital Touchpad Standard, MacroAir Controller 4, 10, 20, 30, AirLynk – BacNet/LonWorks			
Installation				
Mounting Hardware	Rapid Mount Commercial			
Drop Length	In addition to the standard drop length supplied, optional drop lengths are available in 1 inch increments. Total drop lengths 5 feet and greater require Standard Mount and guy wires, and alternate mounting hardware.			
Ratings & Compliance				
Fire and Sprinkler	NFPA Compliant			
Wash Down Duty Rating	IP65			
Certifications	UL 507, CE			

* Delivers 2.8 - 4.2 ft/s of average air speed in the occupied space. This relates to perceived cooling or set point change or 4.9-6.1° F. Consult EnergyLogic LLC for more details.

** Sound testing taken with sensor 5 ft above the ground and 20 ft from the center of the fan at 20 ft high.



AirVolution^D3 (430)

HVLS Fans by
MacroAir
engineers of air™



Medium to Large Spaces

The AirVolution-D3 is ideally suited for medium to large spaces such as car dealerships, manufacturing facilities, and distribution warehouses. Designed to be our most cost-effective HVLS fan, this model incorporates the primary benefits of our gearless technology. It features the highest efficiency motor available, reduced weight, less noise and no maintenance. When high performance, best value and budget are critical factors, the AirVolution-D3 delivers the best ROI of any HVLS fan on the market today.

Key Specs

- Airfoil sizes 10 to 24 ft. integrate into any medium to large space.
- Airfoils also available in black and other customizable colors.
- Custom powder coat paint colors available as well.
- Customizable upgrade options.
- No gearbox means quiet operation and no maintenance.
- Integrates into HVAC and other automated building systems via gateway.
- Wash Down Duty rated for indoor/outdoor use (IP65).
- Backed by a 50,000-hour-warranty.

Touchscreen Remote



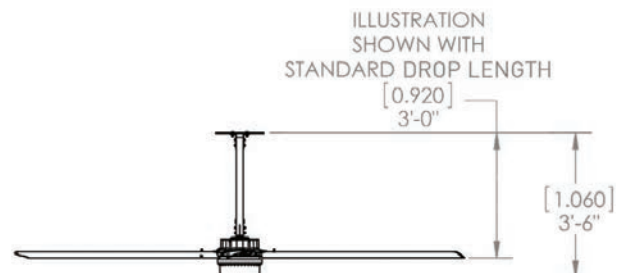
- 20 speed settings
- Forward and reverse
- Integrated warranty hour counter

Warranty

Standard 50,000-hour non-prorated warranty on parts and components. Plus a 3-year warranty on labor.

Mounting Dimensions

Illustration shown with standard extension:



Basic Specifications

Airfoil (Blade) Diameter	10 ft.	12 ft.	14 ft.	16 ft.	18 ft.	20 ft.	24 ft.
Airfoil Type	Extruded Anodized Aluminum Airfoils						
Airfoil Width	7.375"						
Number of Airfoils	3						
Performance							
Variable Speed	0 - 166 RPM	0 - 135 RPM	0 - 118 RPM	0 - 91 RPM	0 - 87 RPM	0 - 81 RPM	0 - 63 RPM
Recommended Industry Spacing *	55 ft.	60 ft.	70 ft.	75 ft.	80 ft.	90 ft.	95 ft.
Sound Level dBA at 100% Speed **	56	55	54	52	52	54	51
Weights							
Hanging Weight	129 lbs	133 lbs	137 lbs	141 lbs	145 lbs	149 lbs	162 lbs
Motor and Drive Train							
Motor Type	Gearless Direct Drive						
Equivalent Horsepower Rating	1.05 HP						
Max Operating Temperature	122°F (50°C)						
Max Amp Draw / Recommended Fuse							
208-240 VAC 1-Phase	3.5 A / 5	3.7 A / 5	4.3 A / 5	3.2 A / 5	4.5 A / 5	5.7 A / 10	6.0 A / 10
208-240 VAC 3-Phase	2.5 A / 5	2.6 A / 5	2.9 A / 5	2.4 A / 5	3.0 A / 5	3.6 A / 5	3.8 A / 5
480 VAC 3-Phase	1.1 A / 5	1.0 A / 5	1.3 A / 5	1.0 A / 5	1.3 A / 5	1.8 A / 5	1.7 A / 5
Power & Controls							
Power Source High	3-Phase 480 VAC +/-5%, 50/60 Hz						
Power Source Low	1-Phase or 3-Phase (208-240) VAC +/-5%, 50/60 Hz						
Control Options	Digital Touchpad Standard, MacroAir Controller 4, 10, 20, 30, AirLynk - BacNet/LonWorks						
Installation							
Mounting Hardware	Fixed Angle Mount						
Drop Length	In addition to the standard drop length supplied, optional drop lengths are available in 1 inch increments. All drop lengths require guy wires.						
Ratings & Compliance							
Fire and Sprinkler	NFPA Compliant						
Wash Down Duty Rating	IP65						
Certifications	UL 507 [†] , CE						

* Delivers 2.8 - 4.2 ft/s of average air speed in the occupied space. This relates to perceived cooling or set point change of 4.9-6.1° F. Consult EnergyLogic LLC for more details.

** Sound testing taken with sensor 5 ft above the ground and 20 ft from the center of the fan at 20 ft high.

† The 460 - 480V AVD3 is not UL Certified





Medium to Large Spaces

For medium to large spaces, the AirVolution-D 550 fan is extremely effective at controlling temperature and humidity. Ideal locations include auto shops, gyms, and agricultural applications. The system design eliminates the gearbox for a lighter, leak-proof fan that is durable and runs with less friction. This design makes it easy to install, maintenance-free, and practically inaudible. The full line is also wash down rated for indoor or outdoor use.

Key Specs

- Airfoil sizes 8 to 18 ft. integrate into any medium to large space.
- Airfoils also available in black and other customizable colors.
- Lighter for easy installation, less wear and tear.
- On-board AirBrain adapts to input voltages, optimizes motor control.
- No gearbox means quiet operation and no maintenance.
- Integrates into HVAC and other automated building systems via gateway.
- Wash Down Duty rated for indoor/outdoor use (IP65).
- Backed by a 50,000-hour-warranty.

Touchscreen Remote



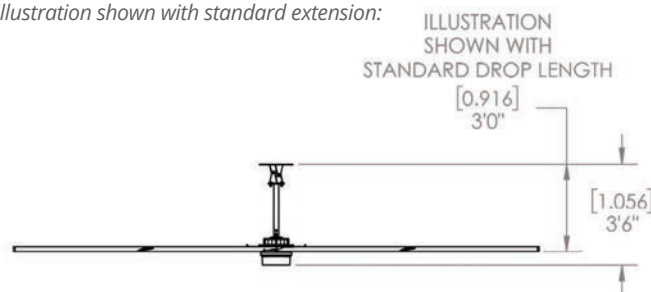
- 20 speed settings
- Forward and reverse
- Integrated warranty hour counter

Warranty

Standard 50,000-hour non-prorated warranty on parts and components. Plus a 3-year warranty on labor.

Mounting Dimensions

Illustration shown with standard extension:



Basic Specifications

Airfoil (Blade) Diameter	8 ft.	10 ft.	12 ft.	14 ft.	16 ft.	18 ft.
Airfoil Type	Extruded Anodized Aluminum Airfoils					
Airfoil Width	7.375"					
Number of Airfoils	6					
Performance						
Variable Speed	1 - 220 RPM	1 - 170 RPM	1 - 137 RPM	1 - 110 RPM	1 - 90 RPM	1 - 74 RPM
Recommended Industry Spacing *	60 ft.	65 ft.	70 ft.	80 ft.	90 ft.	95 ft.
Sound Level dBA at 100% Speed **	61	59	60	56	53	53
Weights						
Hanging Weight	144 lbs	153 lbs	162 lbs	172 lbs	180 lbs	188 lbs
Motor and Drive Train						
Motor Type	Gearless Direct Drive					
Equivalent Horsepower Rating	1.05 HP					
Max Operating Temperature	140°F (60°C)					
Max Amp Draw / Recommended Fuse						
110 VAC 1-Phase	9.0 A / 10	13.9 A / 15	13.9 A / 15	13.9 A / 15	15.2 A / 20	15.2 A / 20
120 VAC 1-Phase	8.3 A / 10	12.7 A / 15	12.7 A / 15	12.7 A / 15	14.0 A / 15	14.0 A / 15
208-240 VAC 1-Phase	4.8 A / 5	7.3 A / 10	7.3 A / 10	7.3 A / 10	8.1 A / 10	8.1 A / 10
277 VAC 1-Phase	3.6 A / 5	5.5 A / 10	5.5 A / 10	5.5 A / 10	6.1 A / 10	6.1 A / 10
208-240 VAC 3-Phase	3.4 A / 5	5.3 A / 10	5.3 A / 10	5.3 A / 10	6.6 A / 10	5.8 A / 10
380 VAC 3-Phase	1.9 A / 5	2.9 A / 5	2.9 A / 5	2.9 A / 10	3.6 A / 5	3.2 A / 5
480 VAC 3-Phase	1.5 A / 5	2.3 A / 5	2.3 A / 5	2.3 A / 5	2.9 A / 5	2.5 A / 5
600 VAC 3-Phase	1.2 A / 5	1.8 A / 5	1.8 A / 5	1.8 A / 5	2.3 A / 5	2.0 A / 5
Power & Controls						
Power Source High	3-Phase (380-600) VAC +/-5%, 50/60 Hz					
Power Source Low	1-Phase or 3-Phase (120-277) VAC +/-5%, 50/60 Hz					
Control Options	Digital Touchpad Standard, MacroAir Controller 4, 10, 20, 30, AirLynk - BacNet/LonWorks					
Installation						
Mounting Hardware	Universal Mount					
Drop Length	In addition to the standard drop length supplied, optional drop lengths are available in 1 inch increments. Guy wires required with Universal Mount; guy wires are optional with Rapid Mount Industrial.					
Ratings & Compliance						
Fire and Sprinkler	NFPA Compliant					
Wash Down Duty Rating	IP65					
Certifications	UL 507, CE					

* Delivers 2.8 - 4.2 ft/s of average air speed in the occupied space. This relates to perceived cooling or set point change or 4.9-6.1° F. Consult EnergyLogic LLC for more details.

** Sound testing taken with sensor 5 ft above the ground and 20 ft from the center of the fan at 20 ft high.





Extra-Large Spaces

Designed for heavy-duty applications, a breakthrough in motor design allows the powerful AirVolution-D 780 fan to generate 75% more wind power. This makes it perfect for extra-large spaces like warehouses, airplane hangars, airports, and stadiums. The fan's durable design also eliminates the gearbox for easy installation, zero maintenance, and operation that's practically inaudible. To ensure safe and reliable performance, the full line is Wash Down rated for indoor or outdoor use.

Key Specs

- Airfoil sizes 20 to 24 ft. integrate into any extra-large space.
- Airfoils also available in black and other customizable colors.
- Lighter for easy installation, less wear and tear.
- On-board AirBrain adapts to input voltages, optimizes motor control.
- No gearbox means quiet operation and no maintenance.
- Integrates into HVAC & other automated building systems via gateway.
- Wash Down Duty rated for indoor/outdoor use (IP65).
- Backed by a 50,000-hour-warranty.

Touchscreen Remote



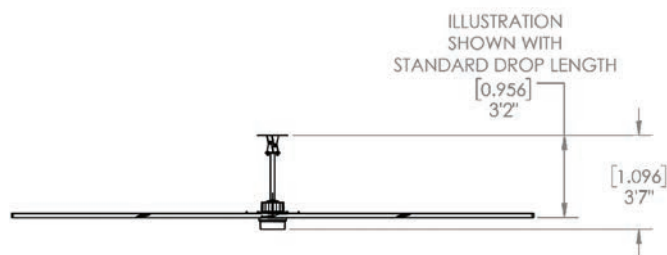
- 20 speed settings
- Forward and reverse
- Integrated warranty hour counter

Warranty

Standard 50,000-hour non-prorated warranty on parts and components. Plus a 3-year warranty on labor.

Mounting Dimensions

Illustration shown with standard extension:



Basic Specifications

Airfoil (Blade) Diameter	20 ft.	24 ft.
Airfoil Type	Extruded Anodized Aluminum Airfoils	
Airfoil Width	7.375"	
Number of Airfoils	6	
Performance		
Variable Speed	1 - 75 RPM	1 - 64 RPM
Recommended Industry Spacing *	105 ft.	115 ft.
Sound Level dBA at 100% Speed **	57	56
Weights		
Hanging Weight	214 lbs.	239 lbs.
Motor and Drive Train		
Motor Type	Gearless Direct Drive	
Equivalent Horsepower Rating	2.1 HP	
Max Operating Temperature	140°F (60°C)	
Max Amp Draw / Recommended Fuse		
208-240 VAC 1-Phase	12.5 A / 15	15.1 A / 20
277 VAC 1-Phase	9.4 A / 10	11.3 A / 15
208-240 VAC 3-Phase	6.8 A / 10	8.2 A / 10
380 VAC 3-Phase	3.7 A / 5	4.5 A / 5
480 VAC 3-Phase	2.9 A / 5	3.5 A / 5
600 VAC 3-Phase	2.3 A / 5	2.8 A / 5
Power & Controls		
Power Source High	3-Phase (380-600) VAC +/-5%, 50/60 Hz	
Power Source Low	1-Phase or 3-Phase (208-277) VAC +/-5%, 50/60 Hz	
Control Options	Digital Touchpad Standard, MacroAir Controller 4, 10, 20, 30, AirLynk – BacNet/LonWorks	
Installation		
Mounting Hardware	Universal Mount	
Drop Length	In addition to the standard drop length supplied, optional drop lengths are available in 1 inch increments. Guy wires required with Universal Mount; guy wires are optional with Rapid Mount Industrial.	
Ratings & Compliance		
Fire and Sprinkler	NFPA Compliant	
Wash Down Duty Rating	IP65	
Certifications	UL 507, CE	

* Delivers 2.8 - 4.2 ft/s of average air speed in the occupied space. This relates to perceived cooling or set point change or 4.9-6.1° F. Consult EnergyLogic LLC for more details.

** Sound testing taken with sensor 5 ft above the ground and 20 ft from the center of the fan at 20 ft high.





IT'S WHAT
GOOD FEELS LIKE™

EnergyLogic, LLC
5901 Crossings Blvd., Antioch, TN 37013
EnergyLogic.com

This document contains privileged and confidential information. EnergyLogic LLC submits this document with the understanding that it will be held in strict confidence. No part of the document may be circulated, quoted, or reproduced for distribution without the express written permission of EnergyLogic LLC.